



R. Christensen  
by Berenson

# DECORATIVE HARDWARE

2026



Featuring the Lips Collection  
in Black


# TABLE OF CONTENTS


Disc ..... 8  
Dual..... 10  
Edge ..... 12  
Fluid ..... 14  
Fuji..... 16  
I-Spazio ..... 18  
Lips ..... 20  
Mini ..... 22  
Right ..... 24  
Seize ..... 26  
Slide ..... 28  
Spiral..... 30  
Square ..... 32  
Stylus ..... 33  
Up ..... 34  
Wave..... 36  
Additional Collections ..... 38

## GENERAL INFORMATION

Simplicity & Ordering ..... 4  
Key to Codes..... 5  
Finish Guide ..... 6  
Display Boards..... 39  
Display Towers..... 42

## LOOK FOR THESE ICONS THROUGHOUT

 Product meets the ISO 14001 Environmental Standard. The production process efficiently uses both energy and material, reducing pollutants and waste

 Product features an Extreme Finish which exceeds KCMA finish standards by 10X, providing extra durability for long-lasting beauty.

Featuring the Mini Collection  
Large Square Knob in Rose Gold  
Small Round Knob in Matte Black  
with 1in. Sample Clip



## ONLINE ACCESS

Industry professionals can activate an account on [BerensonHardware.com](https://www.BerensonHardware.com).

Enjoy 24/7 access to your account tools, including Order Tracking, Recent Orders, Invoices and Backorders.

### NOT A DIRECT BUYER?

You can still create a web account to:

- View product availability
- Save favorites
- Request free samples



## SAMPPLICITY

Choosing the right hardware just got easier. Berenson's SAMPPLICITY sample program lets you experience the look, feel, and quality of our hardware in your own space before making a final decision.

R. Christensen by Berenson sample items are available through a special discount of 50% off MSRP, plus \$4 flat-rate shipping- so you still have access to the styles you need.

### WHAT'S INCLUDED?

- Up to 5 total samples—limit 1 piece per style
- Each order includes a free SAMPPLICITY clip—so you can test your hardware without drilling.
  - 1" Clip – best for doors
  - 3" Clip – best for drawers

### FIND A STORE

Looking to shop in person? Use our Find a Store page to locate nearby showrooms and distributors—just enter your zip code or address.

Not Included: Hooks, appliance pulls.

Samples are for review only. For display boards or merchandising options, contact us to explore your best fit.



Featuring the I-Spazio Collection in Black with 3in. Sample Clip



# KEY TO CODES

## PART NUMBER BREAKDOWN

Parts Are Identified As Follows:

**ITEM #:** Four-digit item code  
(followed by a dash)

**MATERIAL:** One-digit primary material code

**FINISH:** Two-digit code or a character code  
(two or three letters) to distinguish the finish (followed by a dash)

**PACKAGING:** One-letter packaging code



## EXAMPLE

Part Number:

**6076-1SFG-C**

ITEM #

PACKAGING

MATERIAL

FINISH

*Description of Above Example:  
Zinc Diecast, Soft Gold, Supplied  
in a carton w/Mounting Hardware*

## KEY TO MATERIAL CODES

- 1 Zinc Diecast (Zamac)
- 4 Aluminum

## KEY TO PACKAGING CODES

- B** Item is supplied in bulk without mounting screws or escutcheon pins. (Mounting hardware ordered separately.)
- C** Item is supplied in a carton with 8-32 x 1 in. or M4 x 45mm break off screws.
- P** Item is individually polybagged with 8-32 x 1 in. screws or other mounting hardware.



## PRICING BREAKDOWN

Scan the QR code for the most updated pricing brackets for codes A-E.



# FINISH GUIDE



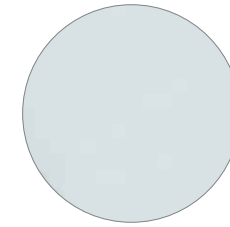
Black  
55



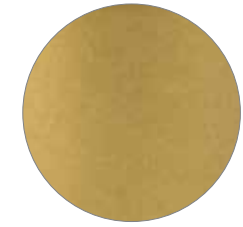
Brushed Nickel  
BPN



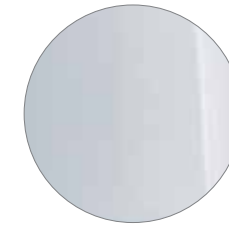
Charcoal Gray  
CG



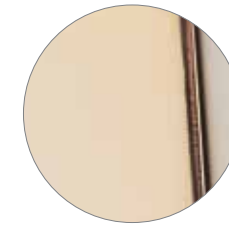
Dull Chrome  
DC



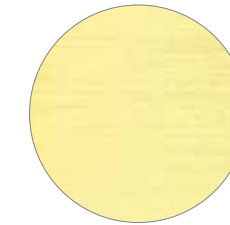
Honey Gold  
HG



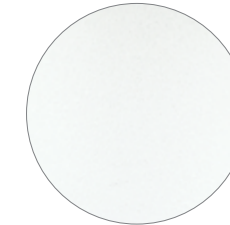
Polished Chrome  
26



Rose Gold  
RSG



Soft Gold  
SFG



White  
48



Featuring the Mini Collection  
in Brushed Nickel



# DISC

feminine curve

## Disc Available Finishes, Sizes & Part Numbers

♻️ COLLECTION DESIGNED WITH GREEN IN MIND

Size Shown: Large



BLACK

Large Knob	6081-1055-C
Small Knob	6077-1055-C



BRUSHED NICKEL

Large Knob	6083-1BPN-C
Small Knob	6079-1BPN-C



SOFT GOLD

Large Knob	6080-1SFG-C
Small Knob	6076-1SFG-C



WHITE

Large Knob	6082-1048-C
Small Knob	6078-1048-C

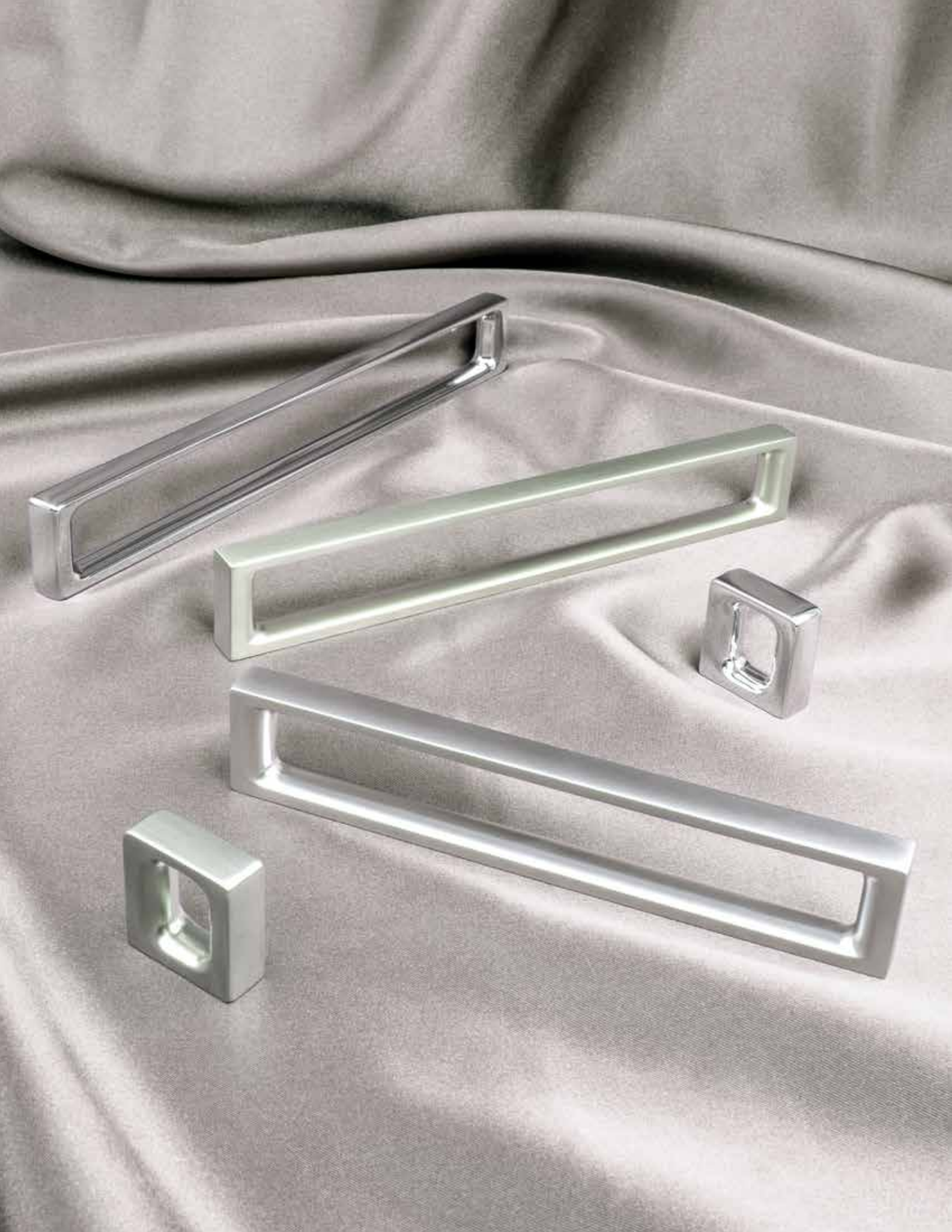
## Disc Product Data

Type	Diameter	Base	Height	Tap
Large Knob	1 9/32in.	3/4in.	1in.	M4
Small Knob	1 3/32in.	5/8in.	29/32in.	M4



# DUAL

negative space



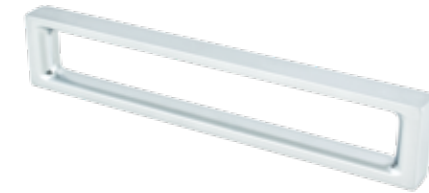
## Dual Available Finishes, Sizes & Part Numbers

♻️ COLLECTION DESIGNED WITH GREEN IN MIND ⚡ DURABLE FINISH



BRUSHED NICKEL

192mm	9302-1BPN-C
160mm	9305-1BPN-C
128mm	9308-1BPN-C
16mm	9311-1BPN-C



DULL CHROME

192mm	9304-10DC-C
160mm	9307-10DC-C
128mm	9310-10DC-C
16mm	9314-10DC-C



POLISHED CHROME ⚡

192mm	9303-1026-C
160mm	9306-1026-C
128mm	9309-1026-C
16mm	9313-1026-C

## Dual Product Data

CC	Length	Width	Height	Tap
192mm	7 7/8in.	3/8in.	1in.	M4
160mm	6 5/8in.	3/8in.	1in.	M4
128mm	5 3/8in.	3/8in.	1in.	M4
16mm	1in.	3/8in.	1in.	M4

CC = center to center | images of parts are not shown at 100% scale



# EDGE

thin design

## Edge Available Finishes, Sizes & Part Numbers

♻️ COLLECTION DESIGNED WITH GREEN IN MIND ⚡ DURABLE FINISH



BRUSHED NICKEL

160mm	9269-1BPN-C
96mm	9272-1BPN-C



DULL CHROME

160mm	9271-10DC-C
96mm	9274-10DC-C



POLISHED CHROME ⚡

160mm	9270-1026-C
96mm	9273-1026-C

## Edge Product Data

CC	Length	Width	Height	Tap
160mm	7 3/8in.	5/16in.	1 3/8in.	M4
96mm	4 7/8in.	5/16in.	1 3/8in.	M4



# FLUID

flowing profile

## Fluid Available Finishes, Sizes & Part Numbers

♻️ COLLECTION DESIGNED WITH GREEN IN MIND



**BLACK**

288mm & 320mm	1320-1055-C
192mm & 224mm	1325-1055-C



**BRUSHED NICKEL**

288mm & 320mm	1321-1BPN-C
192mm & 224mm	1326-1BPN-C



**CHARCOAL GRAY**

288mm & 320mm	1323-10CG-C
192mm & 224mm	1328-10CG-C



**HONEY GOLD**

288mm & 320mm	1345-10HG-C
192mm & 224mm	1346-10HG-C



**POLISHED CHROME**

288mm & 320mm	1322-1026-C
192mm & 224mm	1327-1026-C



**ROSE GOLD**

288mm & 320mm	1349-1RSG-C
192mm & 224mm	1350-1RSG-C



**SOFT GOLD**

288mm & 320mm	1319-1SFG-C
192mm & 224mm	1324-1SFG-C

## Fluid Product Data

CC	Length	Width	Height	Tap
288mm & 320mm	14 3/32in.	1/2in.	1 11/32in.	M4
192mm & 224mm	9 3/32in.	1/2in.	1 1/8in.	M4



# FUJI

gentle peak

## Fuji Available Finishes, Sizes & Part Numbers

♻️ COLLECTION DESIGNED WITH GREEN IN MIND ⚡ DURABLE FINISH



BLACK

224mm	1308-1055-C
160mm	1311-1055-C



BRUSHED NICKEL

224mm	1188-1BPN-C
160mm	1190-1BPN-C



CHARCOAL GRAY

224mm	1310-10CG-C
160mm	1313-10CG-C



POLISHED CHROME ⚡

224mm	1189-1026-C
160mm	1191-1026-C



SOFT GOLD

224mm	1309-1SFG-C
160mm	1312-1SFG-C

## Fuji Product Data

CC	Length	Width	Height	Tap
224mm	12 1/2in.	1 1/4in.	13/16in.	M4
160mm	9in.	1 1/4in.	13/16in.	M4



# I-SPAZIO

industrial

## I-Spazio Available Finishes, Sizes & Part Numbers

♻️ COLLECTION DESIGNED WITH GREEN IN MIND ⚡ DURABLE FINISH



BLACK

192mm*	1316-1055-C
192mm	1317-1055-C
128mm	1318-1055-C



BRUSHED NICKEL

192mm*	9293-1BPN-C
192mm	9296-1BPN-C
128mm	9299-1BPN-C



DULL CHROME

192mm*	9295-10DC-C
192mm	9298-10DC-C
128mm	9301-10DC-C



POLISHED CHROME ⚡

192mm*	9294-1026-C
192mm	9297-1026-C
128mm	9300-1026-C

## I-Spazio Product Data

CC	Length	Width	Height	Tap
192mm*	10 ¼in.	¼in.	1 ¼in.	M4
192mm	10 ¼in.	¼in.	1 ¼in.	M4
128mm	7 ¾in.	¼in.	1 ¼in.	M4

\*These pulls have an off-center handle design.



# LIPS

subtle contour

## Lips Available Finishes, Sizes & Part Numbers

♻️ COLLECTION DESIGNED WITH GREEN IN MIND ⚡ DURABLE FINISH



BLACK

224mm	1314-1055-C
160mm	1315-1055-C



BRUSHED NICKEL

224mm	1184-1BPN-C
160mm	1182-1BPN-C



POLISHED CHROME ⚡

224mm	1185-1026-C
160mm	1183-1026-C

## Lips Product Data

CC	Length	Width	Height	Tap
224mm	12 5/16in.	1 13/16in.	13/16in.	-
160mm	9 7/16in.	1 13/16in.	13/16in.	-



# MINI

perfect accent

## Mini Available Finishes, Sizes & Part Numbers

♻️ COLLECTION DESIGNED WITH GREEN IN MIND

Size Shown: Large



BLACK

Large Round	1336-1055-C
Large Square	1343-1055-C
Small Round	1340-1055-C
Small Square	1344-1055-C



BRUSHED NICKEL

Large Round	1337-1BPN-C
Large Square	1330-1BPN-C
Small Round	1341-1BPN-C
Small Square	1333-1BPN-C



CHARCOAL GRAY

Large Round	1339-10CG-C
Large Square	1332-10CG-C
Small Round	Not Available
Small Square	Not Available



HONEY GOLD

Large Round	1348-10HG-C
Large Square	1347-10HG-C
Small Round	Not Available
Small Square	Not Available



POLISHED CHROME

Large Round	1338-1026-C
Large Square	1331-1026-C
Small Round	1342-1026-C
Small Square	1334-1026-C



ROSE GOLD

Large Round	1351-1RSG-C
Large Square	1353-1RSG-C
Small Round	1352-1RSG-C
Small Square	1354-1RSG-C



SOFT GOLD

Large Round	1335-1SFG-C
Large Square	1329-1SFG-C
Small Round	Not Available
Small Square	Not Available

## Mini Product Data

Type	Length	Width	Diameter	Height	Tap
Large Round	-	-	3 <sup>1</sup> / <sub>32</sub> in.	1 3 <sup>3</sup> / <sub>32</sub> in.	M4
Large Square	3 <sup>1</sup> / <sub>32</sub> in.	3 <sup>1</sup> / <sub>32</sub> in.	-	1 3 <sup>3</sup> / <sub>32</sub> in.	M4
Small Round	-	-	1 <sup>9</sup> / <sub>32</sub> in.	1 <sup>5</sup> / <sub>16</sub> in.	M4
Small Square	1 <sup>9</sup> / <sub>32</sub> in.	1 <sup>9</sup> / <sub>32</sub> in.	-	1 <sup>5</sup> / <sub>16</sub> in.	M4



# RIGHT

sleek edges

## Right Available Finishes, Sizes & Part Numbers

♻️ COLLECTION DESIGNED WITH GREEN IN MIND



BLACK

320mm	6069-1055-C
192mm	6068-1055-C
128mm	6067-1055-C



BRUSHED NICKEL

320mm	6075-1BPN-C
192mm	6074-1BPN-C
128mm	6073-1BPN-C



SOFT GOLD

320mm	6066-1SFG-C
192mm	6065-1SFG-C
128mm	6064-1SFG-C



WHITE

320mm	6072-1048-C
192mm	6071-1048-C
128mm	6070-1048-C

## Right Product Data

CC	Length	Width	Height	Tap
320mm	14 1/16in.	1 9/32in.	1 3/32in.	M4
192mm	9 1/16in.	1 9/32in.	1 3/32in.	M4
128mm	6 1/2in.	1 9/32in.	1 3/32in.	M4

maintain a *flush look*  
on your slab doors.



# SEIZE

recessed design

## Seize Available Finishes, Sizes & Part Numbers

♻️ COLLECTION DESIGNED WITH GREEN IN MIND ⚡ DURABLE FINISH



BRUSHED NICKEL

160mm

| 9281-1BPN-C



DULL CHROME

160mm

| 9283-10DC-C



POLISHED CHROME ⚡

160mm

| 9282-1026-C

## Seize Product Data

CC	Length	Width	Depth	Tap
160mm	7 1/8in.	2in.	7/8in.	M4

the *contemporary* hook design is a sophisticated addition to any room.



# SLIDE

streamlined curves

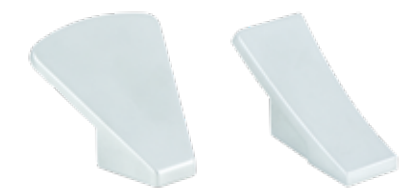
## Slide Available Finishes, Sizes & Part Numbers

♻️ COLLECTION DESIGNED WITH GREEN IN MIND ⚡ DURABLE FINISH



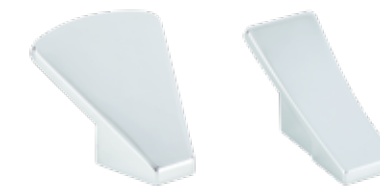
BRUSHED NICKEL

Wide Hook	9278-1BPN-P*
Narrow Hook	9275-1BPN-P



DULL CHROME

Narrow Hook	9277-10DC-P
-------------	-------------



POLISHED CHROME ⚡

Wide Hook	9279-1026-P*
Narrow Hook	9276-1026-P

## Slide Product Data

Type	Length	Width	Height	Tap
Wide Hook	2 1/8in.	2in.	1 7/16in.	-
Narrow Hook	2 1/8in.	1in.	1 3/16in.	-

\*Discontinued, call for availability



# SPIRAL

avant-garde

## Spiral Available Finishes, Sizes & Part Numbers

⚡ DURABLE FINISH



BRUSHED NICKEL

320mm	1144-1BPN-P
224mm	1143-1BPN-P
160mm	1142-1BPN-P



POLISHED CHROME ⚡

320mm	1141-1026-P
224mm	1140-1026-P
160mm	1139-1026-P

## Spiral Product Data

CC	Length	Width	Height	Tap
320mm	13 3/16in.	3/4in.	1in.	M4
224mm	9 3/16in.	3/4in.	1in.	M4
160mm	6 1/16in.	3/4in.	1in.	M4



# SQUARE

90° angles



## Square Available Finishes, Sizes & Part Numbers

♻️ COLLECTION DESIGNED WITH GREEN IN MIND ⚡ DURABLE FINISH



BRUSHED NICKEL

128mm	9284-1BPN-C
96mm	9287-1BPN-C
64mm	9290-1BPN-C



DULL CHROME

128mm	9286-10DC-C
96mm	9289-10DC-C
64mm	9292-10DC-C



POLISHED CHROME ⚡

128mm	9285-1026-C
96mm	9288-1026-C
64mm	9291-1026-C

## Square Product Data

CC	Length	Width	Height	Tap
128mm	5 3/4in.	1/2in.	1 3/16in.	M4
96mm	4 1/2in.	7/16in.	1 3/16in.	M4
64mm	3 1/8in.	3/8in.	1 3/16in.	M4



# STYLUS

practical style

## Stylus Available Finishes, Sizes & Part Numbers

♻️ COLLECTION DESIGNED WITH GREEN IN MIND ⚡ DURABLE FINISH

Size Shown: Extra Small



BRUSHED NICKEL

Large	9324-1BPN-C
Medium	9327-1BPN-C
Small	9330-1BPN-C
Extra Small	9333-1BPN-C



DULL CHROME

Large	9326-10DC-C
Medium	9329-10DC-C
Small	9332-10DC-C
Extra Small	9335-10DC-C



POLISHED CHROME ⚡

Large	9325-1026-C
Medium	9328-1026-C
Small	9331-1026-C
Extra Small	9334-1026-C

## Stylus Product Data

Type	Length	Width	Depth	Tap
Large	2 1/2in.	2 1/2in.	1/2in.	-
Medium	1 7/8in.	1 7/8in.	1/2in.	-
Small	1 1/2in.	1 1/2in.	1/2in.	-
Extra Small	1 1/8in.	1 1/8in.	1/2in.	-



# UP

delicate style

## Up Available Finishes, Sizes & Part Numbers

♻️ COLLECTION DESIGNED WITH GREEN IN MIND ⚡ DURABLE FINISH



BRUSHED NICKEL

64mm	9737-1BPN-C
16mm	9739-1BPN-C



POLISHED CHROME ⚡

64mm	9738-1026-C
16mm	9740-1026-C

## Up Product Data

CC	Length	Width	Height	Tap
64mm	3 5/16in.	3/8in.	2in.	M4
16mm	1 5/8in.	3/8in.	2 15/16in.	M4



# WAVE

commanding boldness

## Wave Available Finishes, Sizes & Part Numbers

♻️ COLLECTION DESIGNED WITH GREEN IN MIND ⚡ DURABLE FINISH

Size Shown: Small



### BRUSHED NICKEL

Large Knob	9315-1BPN-C*
Medium Knob	9318-1BPN-C
Small Knob	9321-1BPN-C



### DULL CHROME

Medium Knob	9320-10DC-C
Small Knob	9323-10DC-C



### POLISHED CHROME ⚡

Large Knob	9316-1026-C*
Medium Knob	9319-1026-C
Small Knob	9322-1026-C

## Wave Product Data

Type	Length	Width	Height	Tap
Large Knob	3 1/8in.	3 1/8in.	1 1/8in.	M4
Medium Knob	1 15/16in.	1 15/16in.	1in.	M4
Small Knob	1 1/4in.	1 1/4in.	1in.	M4

\*Discontinued, call for availability

CC = center to center | images of parts are not shown at 100% scale



Featuring the Arch Collection  
in Brushed Nickel



# ARCH

commanding boldness

## Arch Available Finishes, Sizes & Part Numbers

♻️ COLLECTION DESIGNED WITH GREEN IN MIND ⚡ DURABLE FINISH



### BRUSHED NICKEL

192mm	1187-1BPN-C
128mm	1186-1BPN-C

## Arch Product Data

CC	Length	Width	Height	Tap
192mm	12 5/16in.	7/8in.	3/4in.	M4
128mm	9 7/16in.	1 3/16in.	1 3/16in.	M4



# MIX & MATCH

Find uniquely designed hardware and finishes that coordinate across collections and styles, making it easy to mix, match, and create your own custom pairings

Scan the QR code above to view Limited Quantity and Mix & Match items.



# DISPLAY BOARDS

Display Boards Measure 11 1/4in. x 15 1/4in. x 1/8in.



Edge | Square | Dual

0571-7000-03-W



Fluid | Mini

0572-7000-03-W



Stylus | Seize | Up

0634-7000-03-W



Fuji

0573-7000-03-W



I-Spazio | Lips | Mini

0574-7000-03-W



Right | Disc

0540-7000-03-W



Spiral | Wave | Slide

0633-7000-03-W



Featuring the Fluid & Mini Collections  
in Honey Gold



Featuring the Fluid Collection  
in Polished Chrome



# DISPLAY TOWERS

Scan the QR Code Above to Access the Tower Order Form

R. Christensen by  
Berenson Header —  
0514-7000-02



## 12-BOARD TOWER 0012-2000-01

### WHAT TO KNOW:

Measures 19 3/4in. width by 85 1/16in. height

Holds 12 display boards

Display boards measure 11 13/16 in. x 15 13/16in. x 1/8in.

Our 12-board display tower holds six display boards per side, which can easily be taken out to view more information with your customers. Included with each tower are instructions, hardware and tools for assembly.

Our display boards are laid out to visually represent the way hardware can look in the home. Every available finish and multiple center to center lengths are shown so your customer can see all options available for purchase. These boards are made to fit into our display towers.

### Additional Display Towers & Display Boards

We have a 36-board display tower also available to purchase (Part Number: 0011-2000-01). Choose display boards from Advantage Plus by Berenson, Berenson and R. Christensen by Berenson for a well rounded display of Berenson's offerings.

# R. Christensen by Berenson

2495 Main Street, Suite 111 Buffalo, NY 14214-2152  
Phone: 800.333.0578 | Fax: 716.833.2402  
Email: [Info@BerensonHardware.com](mailto:Info@BerensonHardware.com)  
[BerensonHardware.com](http://BerensonHardware.com)

## FOLLOW US ON SOCIAL MEDIA!



*Scan the QR code for easy access to our social media pages & to view our digital catalogs!*



© 2026 Berenson Corp

26.02  
0490-9000-09