



Advantage
+Plus by Berenson

VALUE HARDWARE

2026



CONTENTS

GENERAL INFORMATION

- Line Overview 3
- Samplicity 5
- Online Ordering 19
- 12-Board Display Tower 20
- QR Codes 21
- Display Boards 22-23
- Spec Data 24-31

- Contemporary Advantage One 6
- Contemporary Advantage Two 7
- Contemporary Advantage Three 8
- Contemporary Advantage Four 9
- Contemporary Advantage Five 10
- Traditional Advantage One 11
- Traditional Advantage Two 12
- Traditional Advantage Three 13
- Traditional Advantage Four 14
- Transitional Advantage One 15
- Transitional Advantage Two 16
- Transitional Advantage Three 17
- Transitional Advantage Four 18
- Advantage Wire Pulls 19

LINE OVERVIEW

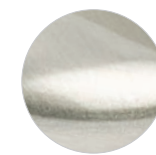
DETAILS

Advantage Plus by Berenson ensures everyone can complete the design of their beautiful home by offering cabinet hardware at an **affordable price**.

The collections included come in popular and trending finishes: Brushed Nickel, Champagne, Matte Black, Polished Chrome, and Verona Bronze. Coming in a variety of stylish designs including edge pulls and cup pulls, there is something here for everyone.

The 12 value collections featured in this line come in three styles: **contemporary, traditional, and transitional**.

FINISHES



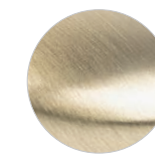
Brushed Nickel
(BPN)



Brushed Nickel
Look
(BNL)



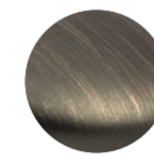
Black / Matte
Black
(55)



Champagne
(CZ)



Polished Chrome
(26)



Verona Bronze
(VB)

CC LENGTHS: 25.4mm CC -192mm CC STYLES: Contemporary | Traditional | Transitional

PART SELECTION

PART NUMBER BREAKDOWN

ITEM #: Four-digit item number (followed by a dash)

MATERIAL: One-digit primary material code

FINISH: Two-digit code or a character code (two or three letters) to distinguish the finish (followed by a dash)

PACKAGING: One-letter packaging code



EXAMPLE

Part Number:

0952-10CZ-P

ITEM #	MATERIAL	FINISH	PACKAGING
--------	----------	--------	-----------

Description: Zinc Diecast, Champagne, Polybagged w/ Mounting Hardware

MATERIAL CODES

- 1 Zinc Diecast (Zamac)
- 2 Steel
- 4 Aluminum

FINISH CODES

- BPN Brushed Nickel
- BNL Brushed Nickel Look
- 55 Black / Matte Black

- CZ Champagne
- 26 Polished Chrome
- VB Verona Bronze

PACKAGING CODE

- P Item is individually polybagged with 8-32 x 1in. screws or other mounting hardware



PRICE CODE BREAKDOWN

Scan the QR code for the most updated pricing brackets for codes A-E.

Featuring Brushed Nickel Round Knobs from the Traditional Advantage One Collection



ONLINE ACCESS

Industry professionals can activate an account on BerensonHardware.com.

Enjoy 24/7 access to your account tools, including Order Tracking, Recent Orders, Invoices and Backorders.

FIND A STORE

Looking to shop in person? Use our Find a Store page to locate nearby showrooms and distributors —just enter your zip code or address.

NOT A DIRECT BUYER?

You can still create a web account to:

- View product availability
- Save favorites
- Request free samples



SAMPLICITY

OUR FREE SAMPLE PROGRAM

Choosing the right hardware just got easier. With Berenson's Smplicity sample program, you can order up to 5 free samples and see how our knobs and pulls look and feel in your space — before you commit!

Not Included: Hooks, appliance pulls. R. Christensen by Berenson items and pulls longer than 160mm CC are available for samples at 50% off MSRP + \$4 flat-rate shipping.

Samples are for review only. For display boards or merchandising options, contact us to explore your best fit.

WHAT'S INCLUDED?

- Free samples of Berenson and Advantage Plus by Berenson knobs and pulls (160mm CC or smaller)
- Up to 5 total samples—limit 1 piece per style
- Fast, free USPS shipping
- Bonus Free Sample Clip! Each order includes a free Smplicity clip—so you can test your hardware without drilling.
 - 1" Clip – best for doors
 - 3" Clip – best for drawers



Featuring the Advantage Plus Two Collection in Matte Black with 3in. Sample Clip

CONTEMPORARY ADVANTAGE ONE



The pulls of this collection feature a flat underside on the handle.

FEATURED IN CHAMPAGNE PULL MATERIAL: ALUMINUM | KNOB MATERIAL: ZINC



96mm CC Square Pull

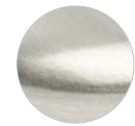


Square Knob

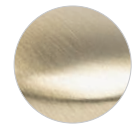


160mm CC Square Pull

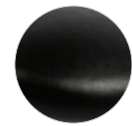
AVAILABLE FINISHES & PART NUMBERS



Brushed Nickel
(BPN)



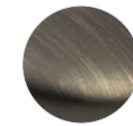
Champagne
(CZ)



Matte Black
(55)



Polished Chrome
(26)



Verona Bronze
(VB)

*192mm CC SQUARE PULL

Brushed Nickel	9018-4BPN-P
Champagne	9028-40CZ-P
Matte Black	9020-4055-P
Polished Chrome	9019-4026-P
Verona Bronze	9032-40VB-P

160mm CC SQUARE PULL

Brushed Nickel	9015-4BPN-P
Champagne	9027-40CZ-P
Matte Black	9017-4055-P
Polished Chrome	9016-4026-P
Verona Bronze	9031-40VB-P

*128mm CC SQUARE PULL

Brushed Nickel	9012-4BPN-P
Champagne	9026-40CZ-P
Matte Black	9014-4055-P
Polished Chrome	9013-4026-P
Verona Bronze	9030-40VB-P

96mm CC SQUARE PULL

Brushed Nickel	9009-4BPN-P
Champagne	9025-40CZ-P
Matte Black	9011-4055-P
Polished Chrome	9010-4026-P
Verona Bronze	9029-40VB-P

SQUARE KNOB

Brushed Nickel	0949-1BPN-P
Champagne	0952-10CZ-P
Matte Black	0951-1055-P
Polished Chrome	0950-1026-P
Verona Bronze	0953-10VB-P

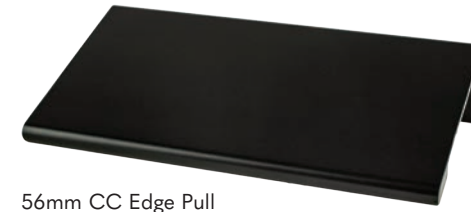
*Product not shown, please visit our website, BerensonHardware.com or scan QR code for additional information.

CONTEMPORARY ADVANTAGE TWO



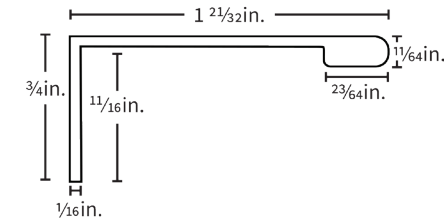
The pulls of this collection feature a flat underside on the handle.

FEATURED IN MATTE BLACK PULL MATERIAL: ALUMINUM



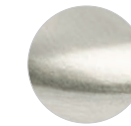
56mm CC Edge Pull

*Edge Pulls come with #6 X 3/8in. wood screws

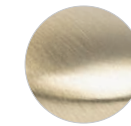


96mm CC Rectangle Pull

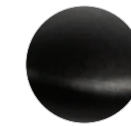
AVAILABLE FINISHES & PART NUMBERS



Brushed Nickel
(BPN)



Champagne
(CZ)



Matte Black
(55)



Polished Chrome
(26)

*112mm CC EDGE PULL

6in. Overall Length

Brushed Nickel Look	9006-4BNL-P
Champagne	8999-40CZ-P
Matte Black	9008-4055-P
Polished Chrome	9007-4026-P

56mm CC EDGE PULL

3in. Overall Length

Brushed Nickel Look	9003-4BNL-P
Champagne	8998-40CZ-P
Matte Black	9005-4055-P
Polished Chrome	9004-4026-P

*25.4mm CC EDGE PULL

1 2 1/2 in. Overall Length

Brushed Nickel Look	9000-4BNL-P
Champagne	8997-40CZ-P
Matte Black	9002-4055-P
Polished Chrome	9001-4026-P

96mm CC RECTANGLE PULL

Brushed Nickel Look	9023-4BNL-P
Champagne	9033-40CZ-P
Matte Black	9024-4055-P
Polished Chrome	9034-4026-P

*Product not shown, please visit our website, BerensonHardware.com or scan QR code for additional information.

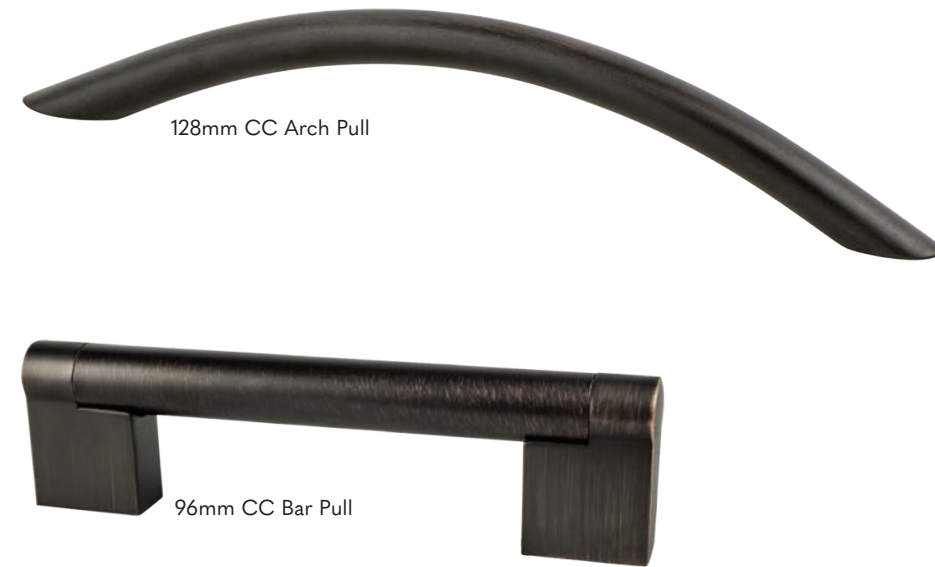
See pages 24-31 for spec data

CONTEMPORARY ADVANTAGE THREE



The pulls of this collection feature a curved underside on the handle.

FEATURED IN VERONA BRONZE ARCH PULL MATERIAL: STEEL | BAR PULL MATERIAL: ZINC



128mm CC Arch Pull

96mm CC Bar Pull

AVAILABLE FINISHES & PART NUMBERS



128mm CC ARCH PULL		*96mm CC ARCH PULL		*■128mm CC BAR PULL	
Brushed Nickel	7921-2BPN-P	Brushed Nickel	7920-2BPN-P	Brushed Nickel	9115-1BPN-P
Champagne	7919-20CZ-P	Champagne	7918-20CZ-P	Champagne	9116-10CZ-P
Matte Black	4137-2055-P	Matte Black	7925-2055-P	Matte Black	9113-1055-P
Polished Chrome	4138-2026-P	Polished Chrome	7924-2026-P	Polished Chrome	9112-1026-P
Verona Bronze	7903-2VB-P	Verona Bronze	7923-20VB-P	Verona Bronze	9114-10VB-P

■ 96mm CC BAR PULL	
Brushed Nickel	9120-1BPN-P
Champagne	9121-10CZ-P
Matte Black	9118-1055-P
Polished Chrome	9117-1026-P
Verona Bronze	9119-10VB-P

■Part is hollow.
*Product not shown, please visit our website, BerensonHardware.com or scan QR code for additional information.

CONTEMPORARY ADVANTAGE FOUR



The pulls of this collection feature a curved underside on the handle.

FEATURED IN POLISHED CHROME FLAT ARCH PULL MATERIAL: ZINC | TAPERED ARCH PULL & KNOB MATERIAL: ALUMINUM

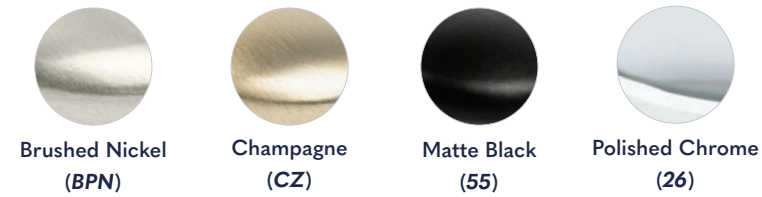


128mm CC Tapered Arch Pull

96mm CC Flat Arch Pull

Round Knob

AVAILABLE FINISHES & PART NUMBERS



*128mm CC FLAT ARCH PULL		128mm CC TAPERED ARCH PULL		96mm CC FLAT ARCH PULL	
Brushed Nickel	9398-1BPN-P	Brushed Nickel	9423-4BPN-P	Brushed Nickel	9395-1BPN-P
Champagne	9122-10CZ-P	Champagne	9123-40CZ-P	Champagne	9124-10CZ-P
Matte Black	9400-1055-P	Matte Black	9425-4055-P	Matte Black	9397-1055-P
Polished Chrome	9399-1026-P	Polished Chrome	9424-4026-P	Polished Chrome	9396-1026-P

*96mm CC TAPERED ARCH PULL		ROUND KNOB	
Brushed Nickel	9418-4BPN-P	Brushed Nickel	9432-4BPN-P
Champagne	9125-40CZ-P	Champagne	9126-40CZ-P
Matte Black	9420-4055-P	Matte Black	9434-4055-P
Polished Chrome	9419-4026-P	Polished Chrome	9433-4026-P

*Product not shown, please visit our website, BerensonHardware.com or scan QR code for additional information.

CONTEMPORARY ADVANTAGE FIVE



The pulls of this collection feature a curved underside on the handle.
 FEATURED IN BRUSHED NICKEL MATERIAL: ZINC



128mm CC Twisted Arch Pull

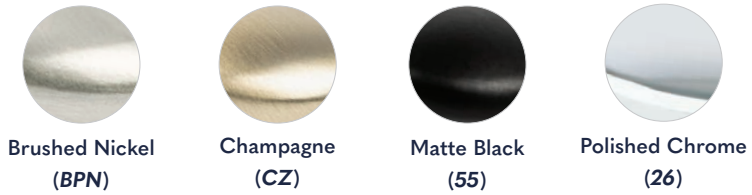


96mm CC Twisted Arch Pull



Narrow Round Knob

AVAILABLE FINISHES & PART NUMBERS



128mm CC TWISTED ARCH PULL	
Brushed Nickel	9412-1BPN-P
Champagne	9127-10CZ-P
Matte Black	9414-1055-P
Polished Chrome	9413-1026-P

96mm CC TWISTED ARCH PULL	
Brushed Nickel	9409-1BPN-P
Champagne	9128-10CZ-P
Matte Black	9411-1055-P
Polished Chrome	9410-1026-P

NARROW ROUND KNOB	
Brushed Nickel	9429-1BPN-P
Champagne	9129-10CZ-P
Matte Black	9431-1055-P
Polished Chrome	9430-1026-P

TRADITIONAL ADVANTAGE ONE



The pulls of this collection feature a flat underside on the handle.
 FEATURED IN CHAMPAGNE MATERIAL: ZINC



3in. CC Squared End Pull



3in. CC Rounded End Pull



Rimmed Knob



Round Knob

AVAILABLE FINISHES & PART NUMBERS



3in. CC SQUARED END PULL	
Brushed Nickel	1786-1BPN-P
Champagne	9199-10CZ-P
Matte Black	9197-1055-P
Verona Bronze	9342-10VB-P

3in. CC ROUNDED END PULL	
Brushed Nickel	1738-1BPN-P
Champagne	9198-10CZ-P
Matte Black	9196-1055-P
Verona Bronze	9344-10VB-P

RIMMED KNOB	
Brushed Nickel	1756-1BPN-P
Champagne	9347-10CZ-P
Matte Black	9341-1055-P
Verona Bronze	9336-10VB-P

ROUND KNOB	
Brushed Nickel	0913-1BPN-P
Champagne	0912-10CZ-P
Matte Black	9021-1055-P
Verona Bronze	9338-10VB-P

TRADITIONAL ADVANTAGE TWO



The pulls of this collection feature a flat underside on the handle.

FEATURED IN MATTE BLACK MATERIAL: ZINC



3in. CC Spade End Pull

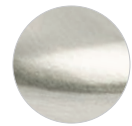


3in. CC Rounded End Pull

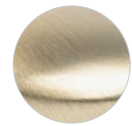


Tiered Knob

AVAILABLE FINISHES & PART NUMBERS



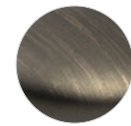
Brushed Nickel
(BPN)



Champagne
(CZ)



Matte Black
(55)



Verona Bronze
(VB)

3in. CC SPADE END PULL

Brushed Nickel	1744-1BPN-P
Champagne	9187-10CZ-P
Matte Black	9186-1055-P
Verona Bronze	9346-10VB-P

3in. CC ROUNDED END PULL

Brushed Nickel	9378-1BPN-P
Champagne	9188-10CZ-P
Matte Black	9189-1055-P
Verona Bronze	9377-10VB-P

TIERED KNOB

Brushed Nickel	9375-1BPN-P
Champagne	9190-10CZ-P
Matte Black	9193-1055-P
Verona Bronze	9374-10VB-P

TRADITIONAL ADVANTAGE THREE



The pulls of this collection feature a flat underside on the handle.

FEATURED IN BRUSHED NICKEL MATERIAL: ZINC



96mm CC Antique Pull

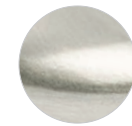


Button Knob

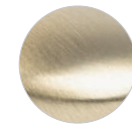


3in. CC Cup Pull

AVAILABLE FINISHES & PART NUMBERS



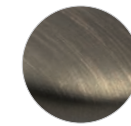
Brushed Nickel
(BPN)



Champagne
(CZ)



Matte Black
(55)



Verona Bronze
(VB)

96mm CC ANTIQUE PULL

Brushed Nickel	9384-1BPN-P
Champagne	9192-10CZ-P
Matte Black	9195-1055-P
Verona Bronze	9383-10VB-P

3in. CC CUP PULL

Brushed Nickel	9387-1BPN-P
Champagne	9191-10CZ-P
Matte Black	9194-1055-P
Verona Bronze	9386-10VB-P

BUTTON KNOB

Brushed Nickel	9381-1BPN-P
Champagne	9169-10CZ-P
Matte Black	9170-1055-P
Verona Bronze	9380-10VB-P

TRADITIONAL ADVANTAGE FOUR



The pulls of this collection feature a flat underside on the handle.
 FEATURED IN VERONA BRONZE MATERIAL: ZINC



3in. CC Ringed Arch Pull



Ringed Knob



3in. CC Rounded End Pull



Mushroom Knob

AVAILABLE FINISHES & PART NUMBERS



Brushed Nickel (BPN) Champagne (CZ) Matte Black (55) Verona Bronze (VB)

3in. CC RINGED ARCH PULL		3in. CC ROUNDED END PULL	
Brushed Nickel	9368-1BPN-P	Brushed Nickel	0924-1BPN-P
Champagne	9130-10CZ-P	Champagne	9135-10CZ-P
Matte Black	9370-1055-P	Matte Black	9134-1055-P
Verona Bronze	9367-10VB-P	Verona Bronze	9353-10VB-P

RINGED KNOB	
Brushed Nickel	0931-1BPN-P
Champagne	9131-10CZ-P
Matte Black	0935-155-P
Verona Bronze	9365-10VB-P

MUSHROOM KNOB	
Brushed Nickel	0925-1BPN-P
Champagne	9133-10CZ-P
Matte Black	9132-1055-P
Verona Bronze	9351-10VB-P

TRANSITIONAL ADVANTAGE ONE



The pulls of this collection feature a flat underside on the handle.
 FEATURED IN BRUSHED NICKEL MATERIAL: ZINC



128mm CC Bow Pull

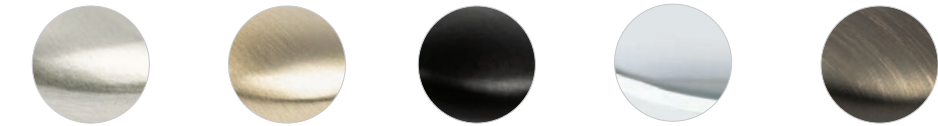


96mm CC Bow Pull



Rounded Rectangle Knob has pin at bottom to help secure in position

AVAILABLE FINISHES & PART NUMBERS



Brushed Nickel (BPN) Champagne (CZ) Matte Black (55) Polished Chrome (26) Verona Bronze (VB)

128mm CC BOW PULL		96mm CC BOW PULL		ROUNDED RECTANGLE KNOB	
Brushed Nickel	9176-1BPN-P	Brushed Nickel	9171-1BPN-P	Brushed Nickel	9181-1BPN-P
Champagne	9179-10CZ-P	Champagne	9174-10CZ-P	Champagne	9184-10CZ-P
Matte Black	9178-1055-P	Matte Black	9173-1055-P	Matte Black	9183-1055-P
Polished Chrome	9177-1026-P	Polished Chrome	9172-1026-P	Polished Chrome	9182-1026-P
Verona Bronze	9180-10VB-P	Verona Bronze	9175-10VB-P	Verona Bronze	9185-10VB-P

TRANSITIONAL ADVANTAGE TWO



The pulls of this collection feature a curved underside on the handle.

FEATURED IN BLACK MATERIAL: STEEL

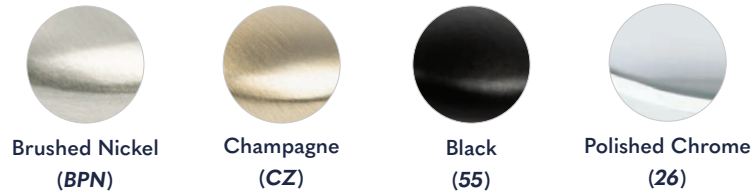


160mm CC T-Bar Pull

3in. CC T-Bar Pull

T-Bar Knob

AVAILABLE FINISHES & PART NUMBERS



*192mm CC T-BAR PULL

Black	9522-2055-P
Brushed Nickel	9561-2BPN-P
Champagne	9524-20CZ-P
Polished Chrome	9520-2026-P

160mm CC T-BAR PULL

Black	9521-2055-P
Brushed Nickel	9559-2BPN-P
Champagne	9523-20CZ-P
Polished Chrome	9519-2026-P

*128mm CC T-BAR PULL

Black	9546-2055-P
Brushed Nickel	9402-2BPN-P
Champagne	9542-20CZ-P
Polished Chrome	9550-2026-P

*96mm CC T-BAR PULL

Black	9545-2055-P
Brushed Nickel	9401-2BPN-P
Champagne	9541-20CZ-P
Polished Chrome	9549-2026-P

3in. CC T-BAR PULL

Black	9544-2055-P
Brushed Nickel	9557-2BPN-P
Champagne	9540-20CZ-P
Polished Chrome	9548-2026-P

T-BAR KNOB

Black	9547-2055-P
Brushed Nickel	9435-2BPN-P
Champagne	9543-20CZ-P
Polished Chrome	9551-2026-P

*Product not shown, please visit our website, BerensonHardware.com or scan QR code for additional information.

TRANSITIONAL ADVANTAGE THREE



The pulls of this collection feature a curved underside on the handle.

FEATURED IN CHAMPAGNE MATERIAL: ZINC



96mm CC Rounded End Pull

64mm CC Cup Pull

Oval Knob has pin at bottom to help secure in position

AVAILABLE FINISHES & PART NUMBERS



96mm CC ROUNDED END PULL

Brushed Nickel	0992-1BPN-P
Champagne	9138-10CZ-P
Matte Black	9359-1055-P
Polished Chrome	0991-126-P
Verona Bronze	9357-10VB-P

64mm CC CUP PULL

Brushed Nickel	0963-1BPN-P
Champagne	9136-10CZ-P
Matte Black	0967-155-P
Polished Chrome	0961-126-P
Verona Bronze	9360-10VB-P

OVAL KNOB

Brushed Nickel	0920-1BPN-P
Champagne	9137-10CZ-P
Matte Black	0930-1055-P
Polished Chrome	0919-126-P
Verona Bronze	9362-10VB-P

TRANSITIONAL ADVANTAGE FOUR

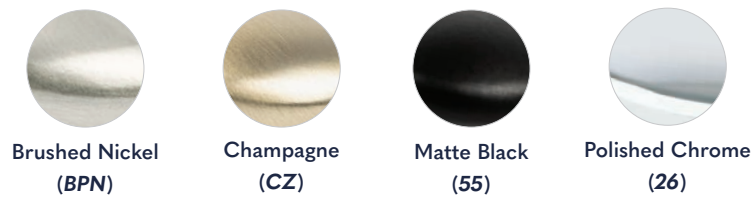


The pulls of this collection feature a curved underside on the handle.

FEATURED IN CHAMPAGNE BAR PULL & KNOB MATERIAL: ZINC | RECTANGLE PULL MATERIAL: ALUMINUM



AVAILABLE FINISHES & PART NUMBERS



*192mm CC RECTANGLE PULL		*160mm CC RECTANGLE PULL		128mm CC RECTANGLE PULL		*96mm CC RECTANGLE PULL	
Brushed Nickel	9060-4BPN-P	Brushed Nickel	9056-4BPN-P	Brushed Nickel	9052-4BPN-P	Brushed Nickel	9048-4BPN-P
Champagne	9063-40CZ-P	Champagne	9059-40CZ-P	Champagne	9055-40CZ-P	Champagne	9051-40CZ-P
Matte Black	9061-4055-P	Matte Black	9057-4055-P	Matte Black	9053-4055-P	Matte Black	9049-4055-P
Polished Chrome	9062-4026-P	Polished Chrome	9058-4026-P	Polished Chrome	9054-4026-P	Polished Chrome	9050-4026-P

*128mm CC BAR PULL	
Brushed Nickel	9041-1BPN-P
Champagne	9047-10CZ-P
Matte Black	9043-1055-P
Polished Chrome	9045-1026-P

96mm CC BAR PULL	
Brushed Nickel	9040-1BPN-P
Champagne	9046-10CZ-P
Matte Black	9042-1055-P
Polished Chrome	9044-1026-P

KNOB	
Brushed Nickel	0036-1BPN-P
Champagne	9064-10CZ-P
Matte Black	0047-1055-P
Polished Chrome	0049-1026-P

*Product not shown, please visit our website, BerensonHardware.com or scan QR code for additional information.

ADVANTAGE WIRE PULLS



The pulls of this collection feature a curved underside on the handle.

FEATURED IN POLISHED CHROME PLEASE NOTE NOT ALL PARTS AVAILABLE IN EVERY MATERIAL. PLEASE SEE CODE:
▲STEEL ●ALUMINUM



AVAILABLE FINISHES & PART NUMBERS



4in. CC WIRE PULL		96mm CC WIRE PULL		3 1/2in. CC WIRE PULL		3in. CC WIRE PULL	
Brushed Nickel	▲ 6246-2BPN-P	Brushed Nickel	▲ 6244-2BPN-P	Brushed Nickel	▲ 6242-2BPN-P	Brushed Nickel	▲ 6240-2BPN-P
Matte Black	▲ 6126-2055-P	Matte Black	▲ 6127-2055-P	Matte Black	▲ 6128-2055-P	Matte Black	▲ 6129-2055-P
Polished Brass	▲ 6150-203-P	Polished Brass	▲ 6151-203-P	Polished Brass	▲ 6152-203-P	Polished Brass	▲ 6153-203-P
Polished Chrome	▲ 6140-226-P	Polished Chrome	▲ 6141-226-P	Polished Chrome	▲ 6142-226-P	Polished Chrome	▲ 6143-226-P
Satin Aluminum	● 6136-4SAL-P	Satin Aluminum	● 6137-4SAL-P	Satin Aluminum	● 6134-4SAL-P	Satin Aluminum	● 6135-4SAL-P
Satin Brass	▲ 6160-2SB-P	Satin Brass	▲ 6161-2SB-P	Satin Brass	▲ 6162-2SB-P	Satin Brass	▲ 6163-2SB-P
Satin Chrome	▲ 6130-2SC-P	Satin Chrome	▲ 6131-2SC-P	Satin Chrome	▲ 6132-2SC-P	Satin Chrome	▲ 6133-2SC-P
Verona Bronze	▲ 6170-20VB-P	Verona Bronze	▲ 6171-20VB-P	Verona Bronze	▲ 6172-20VB-P	Verona Bronze	▲ 6173-20VB-P

The following wire pulls conform to ANSI/BHMA A156.9-2001: 6130-2SC-P, 6131-2SC-P, 6132-2SC-P, 6133-2SC-P

See pages 24-31 for spec data



12-BOARD Display Tower

Scan the QR Code to access the Tower Order Form
0012-2000-01

FEATURES:

Measures 19 3/4 in. Width by
85 1/16 in. Height

Holds 12 Display Boards

Rotates 360° for Easy Access

Easy to Assemble

Our 12-board display tower holds six display boards per side, which can easily be taken out to view more information with your customers. Included with each tower are assembly instructions, hardware and tools for assembly.

Our display boards are laid out to visually represent the way hardware can look in the home. Every available finish and multiple center to center lengths are shown so your customer can see all options available for purchase. These boards are made to fit into our display towers.

Additional Display Towers & Display Boards
We have a 36-board display tower also available to purchase (Part Number: 0011-2000-01). Choose display boards from Advantage Plus by Berenson, Berenson and R. Christensen by Berenson for a well rounded display of Berenson's offerings.



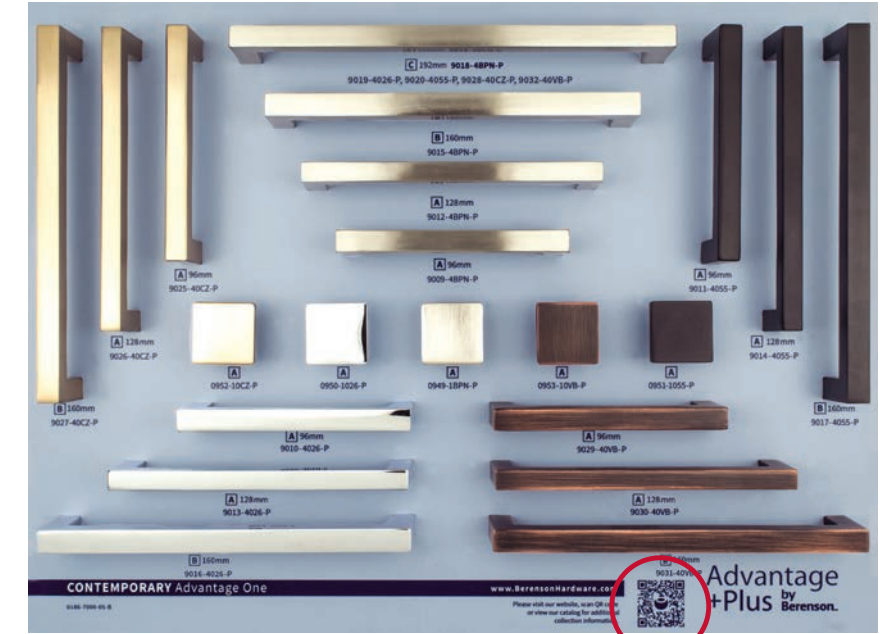
ADVANTAGE PLUS
BY BERENSON
BRAND HEADER
0513-7000-02

HARDWARE
DISPLAY
BOARD



QR CODES

We want to provide our customers the most up to date information, using the latest technologies available. The QR codes printed on our display boards and throughout our catalogs work seamlessly with our website and allow access to more information than ever before!



The QR code on Advantage Plus by Berenson display boards can be scanned using an online QR code scanner or app on a smartphone or tablet.

When scanned, the QR code will bring up a convenient to use page on our website, with parts from the collection(s) featured on the board grouped by CC length.

This page is just a click away and offers additional information on all parts in the collection, including those not on the display board.



DISPLAY BOARDS

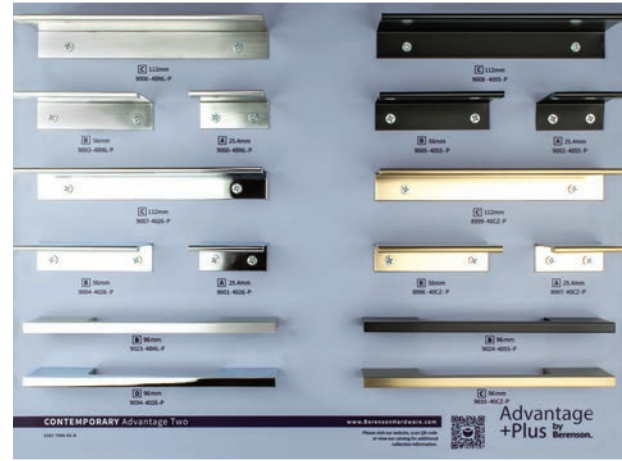
Boards measure 11 13/16in. x 15 13/16in. x 1/8in.

CONTEMPORARY Advantage One



0186-7000-05-B PG. 6

CONTEMPORARY Advantage Two



0187-7000-05-B PG. 7

TRADITIONAL Advantage Two



0192-7000-05-B PG. 12

TRADITIONAL Advantage Three



0193-7000-05-B PG. 13

CONTEMPORARY Advantage Three



0188-7000-05-B PG. 8

CONTEMPORARY Advantage Four



0189-7000-05-B PG. 9

TRADITIONAL Advantage Four



0194-7000-05-B PG. 14

TRANSITIONAL Advantage One



0195-7000-05-B PG. 15

CONTEMPORARY Advantage Five



0190-7000-05-B PG. 10

TRADITIONAL Advantage One



0191-7000-05-B PG. 11

TRANSITIONAL Advantage Two



0196-7000-05-B PG. 16

TRANSITIONAL Advantage Three



0197-7000-05-B PG. 17

All boards have part numbers printed on them (-05 boards).

DISPLAY BOARDS

Boards measure 11 13/16in. x 15 13/16in. x 1/8in.

TRANSITIONAL Advantage Four



0647-7000-05-B

PG. 18

SPEC DATA

CONTEMPORARY Advantage One

Part No.	Product Type	Finish	Material	CC	Length	Width	Height/Projection	Hand Clearance	Diameter	Base	Tap/ Screws(Qty)	Page No.
0949-1BPN-P	Knob	Brushed Nickel	Zinc	-	1 1/8in.	1 1/8in.	15/16in.	23/32in.	-	7/16in.	8-32 x 1in. (1)	6
0950-1026-P	Knob	Polished Chrome	Zinc	-	1 1/8in.	1 1/8in.	15/16in.	23/32in.	-	7/16in.	8-32 x 1in. (1)	6
0951-1055-P	Knob	Matte Black	Zinc	-	1 1/8in.	1 1/8in.	15/16in.	23/32in.	-	7/16in.	8-32 x 1in. (1)	6
0952-10CZ-P	Knob	Champagne	Zinc	-	1 1/8in.	1 1/8in.	15/16in.	23/32in.	-	7/16in.	8-32 x 1in. (1)	6
0953-10VB-P	Knob	Verona Bronze	Zinc	-	1 1/8in.	1 1/8in.	15/16in.	23/32in.	-	7/16in.	8-32 x 1in. (1)	6
9009-4BPN-P	Pull	Brushed Nickel	Aluminum	96mm	4 3/16in.	1 3/32in.	1 3/4in.	5 1/4in.	-	1 3/32in.	8-32 x 1in. (2)	6
9010-4026-P	Pull	Polished Chrome	Aluminum	96mm	4 3/16in.	1 3/32in.	1 3/4in.	5 1/4in.	-	1 3/32in.	8-32 x 1in. (2)	6
9011-4055-P	Pull	Matte Black	Aluminum	96mm	4 3/16in.	1 3/32in.	1 3/4in.	5 1/4in.	-	1 3/32in.	8-32 x 1in. (2)	6
9012-4BPN-P	Pull	Brushed Nickel	Aluminum	128mm	5 7/16in.	1 3/32in.	1 3/4in.	5 1/4in.	-	1 3/32in.	8-32 x 1in. (2)	6
9013-4026-P	Pull	Polished Chrome	Aluminum	128mm	5 7/16in.	1 3/32in.	1 3/4in.	5 1/4in.	-	1 3/32in.	8-32 x 1in. (2)	6
9014-4055-P	Pull	Matte Black	Aluminum	128mm	5 7/16in.	1 3/32in.	1 3/4in.	5 1/4in.	-	1 3/32in.	8-32 x 1in. (2)	6
9015-4BPN-P	Pull	Brushed Nickel	Aluminum	160mm	6 23/32in.	1 3/32in.	1 3/4in.	5 1/4in.	-	1 3/32in.	8-32 x 1in. (2)	6
9016-4026-P	Pull	Polished Chrome	Aluminum	160mm	6 23/32in.	1 3/32in.	1 3/4in.	5 1/4in.	-	1 3/32in.	8-32 x 1in. (2)	6
9017-4055-P	Pull	Matte Black	Aluminum	160mm	6 23/32in.	1 3/32in.	1 3/4in.	5 1/4in.	-	1 3/32in.	8-32 x 1in. (2)	6
9018-4BPN-P	Pull	Brushed Nickel	Aluminum	192mm	8in.	1 3/32in.	1 3/4in.	7in.	-	1 3/32in.	8-32 x 1in. (2)	6
9019-4026-P	Pull	Polished Chrome	Aluminum	192mm	8in.	1 3/32in.	1 3/4in.	7in.	-	1 3/32in.	8-32 x 1in. (2)	6
9020-4055-P	Pull	Matte Black	Aluminum	192mm	8in.	1 3/32in.	1 3/4in.	7in.	-	1 3/32in.	8-32 x 1in. (2)	6
9025-40CZ-P	Pull	Champagne	Aluminum	96mm	4 3/16in.	1 3/32in.	1 3/4in.	5 1/4in.	-	1 3/32in.	8-32 x 1in. (2)	6
9026-40CZ-P	Pull	Champagne	Aluminum	128mm	5 7/16in.	1 3/32in.	1 3/4in.	5 1/4in.	-	1 3/32in.	8-32 x 1in. (2)	6
9027-40CZ-P	Pull	Champagne	Aluminum	160mm	6 23/32in.	1 3/32in.	1 3/4in.	5 1/4in.	-	1 3/32in.	8-32 x 1in. (2)	6

CONTEMPORARY Advantage One (continued)

Part No.	Product Type	Finish	Material	CC	Length	Width	Height/Projection	Hand Clearance	Diameter	Base	Tap/ Screws(Qty)	Page No.
9028-40CZ-P	Pull	Champagne	Aluminum	192mm	8in.	1 3/32in.	1 3/4in.	7in.	-	1 3/32in.	8-32 x 1in. (2)	6
9029-40VB-P	Pull	Verona Bronze	Aluminum	96mm	4 3/16in.	1 3/32in.	1 3/4in.	5 1/4in.	-	1 3/32in.	8-32 x 1in. (2)	6
9030-40VB-P	Pull	Verona Bronze	Aluminum	128mm	5 7/16in.	1 3/32in.	1 3/4in.	5 1/4in.	-	1 3/32in.	8-32 x 1in. (2)	6
9031-40VB-P	Pull	Verona Bronze	Aluminum	160mm	6 23/32in.	1 3/32in.	1 3/4in.	5 1/4in.	-	1 3/32in.	8-32 x 1in. (2)	6
9032-40VB-P	Pull	Verona Bronze	Aluminum	192mm	8in.	1 3/32in.	1 3/4in.	7in.	-	1 3/32in.	8-32 x 1in. (2)	6

CONTEMPORARY Advantage Two

Part No.	Product Type	Finish	Material	CC	Length	Width	Height/Projection	Hand Clearance	Diameter	Base	Tap/ Screws(Qty)	Page No.
8997-40CZ-P	Edge Pull	Champagne	Aluminum	25.4mm	1 25/32in.	3/4in.	1 2 1/32in.		-	3/4in.	3/8in. Wood Screw (2)	7
8998-40CZ-P	Edge Pull	Champagne	Aluminum	56mm	3in.	3/4in.	1 2 1/32in.		-	3/4in.	3/8in. Wood Screw (2)	7
8999-40CZ-P	Edge Pull	Champagne	Aluminum	112mm	6in.	3/4in.	1 2 1/32in.		-	3/4in.	3/8in. Wood Screw (2)	7
9000-4BNL-P	Edge Pull	Brushed Nickel Look	Aluminum	25.4mm	1 25/32in.	3/4in.	1 2 1/32in.		-	3/4in.	3/8in. Wood Screw (2)	7
9001-4026-P	Edge Pull	Polished Chrome	Aluminum	25.4mm	1 25/32in.	3/4in.	1 2 1/32in.		-	3/4in.	3/8in. Wood Screw (2)	7
9002-4055-P	Edge Pull	Matte Black	Aluminum	25.4mm	1 25/32in.	3/4in.	1 2 1/32in.		-	3/4in.	3/8in. Wood Screw (2)	7
9003-4BNL-P	Edge Pull	Brushed Nickel Look	Aluminum	56mm	3in.	3/4in.	1 2 1/32in.		-	3/4in.	3/8in. Wood Screw (2)	7
9004-4026-P	Edge Pull	Polished Chrome	Aluminum	56mm	3in.	3/4in.	1 2 1/32in.		-	3/4in.	3/8in. Wood Screw (2)	7
9005-4055-P	Edge Pull	Matte Black	Aluminum	56mm	3in.	3/4in.	1 2 1/32in.		-	3/4in.	3/8in. Wood Screw (2)	7
9006-4BNL-P	Edge Pull	Brushed Nickel Look	Aluminum	112mm	6in.	3/4in.	1 2 1/32in.		-	3/4in.	3/8in. Wood Screw (2)	7
9007-4026-P	Edge Pull	Polished Chrome	Aluminum	112mm	6in.	3/4in.	1 2 1/32in.		-	3/4in.	3/8in. Wood Screw (2)	7
9008-4055-P	Edge Pull	Matte Black	Aluminum	112mm	6in.	3/4in.	1 2 1/32in.		-	3/4in.	3/8in. Wood Screw (2)	7
9023-4BNL-P	Pull	Brushed Nickel Look	Aluminum	96mm	6 5/16in.	1/4in.	1 1/16in.	5 1/4in.	-	1 1/2in.	8-32 x 1in. (2)	7
9024-4055-P	Pull	Matte Black	Aluminum	96mm	6 5/16in.	1/4in.	1 1/16in.	5 1/4in.	-	1 1/2in.	8-32 x 1in. (2)	7
9033-40CZ-P	Pull	Champagne	Aluminum	96mm	6 5/16in.	1/4in.	1 1/16in.	5 1/4in.	-	1 1/2in.	8-32 x 1in. (2)	7
9034-4026-P	Pull	Polished Chrome	Aluminum	96mm	6 5/16in.	1/4in.	1 1/16in.	5 1/4in.	-	1 1/2in.	8-32 x 1in. (2)	7

CONTEMPORARY Advantage Three

Part No.	Product Type	Finish	Material	CC	Length	Width	Height/Projection	Hand Clearance	Diameter	Base	Tap/ Screws(Qty)	Page No.
4137-2055-P	Pull	Matte Black	Steel	128mm	6in.	3/8in.	1 3/16in.	5 1/4in.	-	3/8in.	8-32 x 1in. (2)	8
4138-2026-P	Pull	Polished Chrome	Steel	128mm	6in.	3/8in.	1 3/16in.	5 1/4in.	-	3/8in.	8-32 x 1in. (2)	8
7903-2VB-P	Pull	Verona Bronze	Steel	128mm	6in.	3/8in.	1 3/16in.	5 1/4in.	-	3/8in.	8-32 x 1in. (2)	8
7918-20CZ-P	Pull	Champagne	Steel	96mm	4 1/2in.	3/8in.	1 1/8in.	1 3/4in.	-	3/8in.	8-32 x 1in. (2)	8
7919-20CZ-P	Pull	Champagne	Steel	128mm	6in.	3/8in.	1 3/16in.	5 1/4in.	-	3/8in.	8-32 x 1in. (2)	8
7920-2BPN-P	Pull	Brushed Nickel	Steel	96mm	4 1/2in.	3/8in.	1 1/8in.	1 3/4in.	-	3/8in.	8-32 x 1in. (2)	8
7921-2BPN-P	Pull	Brushed Nickel	Steel	128mm	6in.	3/8in.	1 3/16in.	5 1/4in.	-	3/8in.	8-32 x 1in. (2)	8
7923-20VB-P	Pull	Verona Bronze	Steel	96mm	4 1/2in.	3/8in.	1 1/8in.	1 3/4in.	-	3/8in.	8-32 x 1in. (2)	8
7924-2026-P	Pull	Polished Chrome	Steel	96mm	4 1/2in.	3/8in.	1 1/8in.	1 3/4in.	-	3/8in.	8-32 x 1in. (2)	8
7925-2055-P	Pull	Matte Black	Steel	96mm	4 1/2in.	3/8in.	1 1/8in.	1 3/4in.	-	3/8in.	8-32 x 1in. (2)	8
9112-1026-P	Pull	Polished Chrome	Zinc	128mm	5 3/8in.	1/2in.	1 7/32in.	2 3/32in.	-	2 5/32in.	8-32 x 1in. (2)	8
9113-1055-P	Pull	Matte Black	Zinc	128mm	5 3/8in.	1/2in.	1 7/32in.	2 3/32in.	-	2 5/32in.	8-32 x 1in. (2)	8
9114-10VB-P	Pull	Verona Bronze	Zinc	128mm	5 3/8in.	1/2in.	1 7/32in.	2 3/32in.	-	2 5/32in.	8-32 x 1in. (2)	8
9115-1BPN-P	Pull	Brushed Nickel	Zinc	128mm	5 3/8in.	1/2in.	1 7/32in.	2 3/32in.	-	2 5/32in.	8-32 x 1in. (2)	8

SPEC DATA

CONTEMPORARY Advantage Three *(continued)*

Part No.	Product Type	Finish	Material	CC	Length	Width	Height/Projection	Hand Clearance	Diameter	Base	Tap/ Screws(Qty)	Page No.
9116-10CZ-P	Pull	Champagne	Zinc	128mm	5 3/8in.	1/2in.	1 7/32in.	2 3/32in.	-	2 3/32in.	8-32 x 1in. (2)	8
9117-1026-P	Pull	Polished Chrome	Zinc	96mm	4 3/16in.	1/2in.	1 3/16in.	2 3/32in.	-	1 3/16in.	8-32 x 1in. (2)	8
9118-1055-P	Pull	Matte Black	Zinc	96mm	4 3/16in.	1/2in.	1 3/16in.	2 3/32in.	-	1 3/16in.	8-32 x 1in. (2)	8
9119-10VB-P	Pull	Verona Bronze	Zinc	96mm	4 3/16in.	1/2in.	1 3/16in.	2 3/32in.	-	1 3/16in.	8-32 x 1in. (2)	8
9120-1BPN-P	Pull	Brushed Nickel	Zinc	96mm	4 3/16in.	1/2in.	1 3/16in.	2 3/32in.	-	1 3/16in.	8-32 x 1in. (2)	8
9121-10CZ-P	Pull	Champagne	Zinc	96mm	4 3/16in.	1/2in.	1 3/16in.	2 3/32in.	-	1 3/16in.	8-32 x 1in. (2)	8

CONTEMPORARY Advantage Four

Part No.	Product Type	Finish	Material	CC	Length	Width	Height/Projection	Hand Clearance	Diameter	Base	Tap/ Screws(Qty)	Page No.
9122-10CZ-P	Pull	Champagne	Zinc	128mm	5 5/8in.	5/8in.	1 1/2in.	5 5/8in.	-	7/8in.	8-32 x 1in. (2)	9
9123-40CZ-P	Pull	Champagne	Aluminum	128mm	5 1 3/16in.	1/2in.	1 1/2in.	5 5/8in.	-	1 1/2in.	8-32 x 1in. (2)	9
9124-10CZ-P	Pull	Champagne	Zinc	96mm	4 1/2in.	1/2in.	1in.	2 9/32in.	-	5/8in.	8-32 x 1in. (2)	9
9125-40CZ-P	Pull	Champagne	Aluminum	96mm	4 1/2in.	7/8in.	1in.	7/8in.	-	5/8in.	8-32 x 1in. (2)	9
9126-40CZ-P	Knob	Champagne	Aluminum	-	-	-	1 1/2in.	3 3/4in.	1 1/2in.	3/4in.	8-32 x 1in. (1)	9
9395-1BPN-P	Pull	Brushed Nickel	Zinc	96mm	4 1/2in.	1/2in.	1in.	2 9/32in.	-	5/8in.	8-32 x 7/8in. (2)	9
9396-1026-P	Pull	Polished Chrome	Zinc	96mm	4 1/2in.	1/2in.	1in.	2 9/32in.	-	5/8in.	8-32 x 7/8in. (2)	9
9397-1055-P	Pull	Matte Black	Zinc	96mm	4 1/2in.	1/2in.	1in.	2 9/32in.	-	5/8in.	8-32 x 7/8in. (2)	9
9398-1BPN-P	Pull	Brushed Nickel	Zinc	128mm	5 5/8in.	5/8in.	1 1/2in.	5 5/8in.	-	7/8in.	8-32 x 7/8in. (2)	9
9399-1026-P	Pull	Polished Chrome	Zinc	128mm	5 5/8in.	5/8in.	1 1/2in.	5 5/8in.	-	7/8in.	8-32 x 7/8in. (2)	9
9400-1055-P	Pull	Matte Black	Zinc	128mm	5 5/8in.	5/8in.	1 1/2in.	5 5/8in.	-	7/8in.	8-32 x 7/8in. (2)	9
*9418-4BPN-P	Pull	Brushed Nickel	Aluminum	96mm	4 1/2in.	7/8in.	1in.	7/8in.	-	5/8in.	8-32 x 1in. (2)	9
9419-4026-P	Pull	Polished Chrome	Aluminum	96mm	4 1/2in.	7/8in.	1in.	7/8in.	-	5/8in.	8-32 x 7/8in. (2)	9
9420-4055-P	Pull	Matte Black	Aluminum	96mm	4 1/2in.	7/8in.	1in.	7/8in.	-	5/8in.	8-32 x 7/8in. (2)	9
*9423-4BPN-P	Pull	Brushed Nickel	Aluminum	128mm	5 1 3/16in.	1/2in.	1 1/2in.	5 5/8in.	-	1 1/2in.	8-32 x 1in. (2)	9
9424-4026-P	Pull	Polished Chrome	Aluminum	128mm	5 1 3/16in.	1/2in.	1 1/2in.	5 5/8in.	-	1 1/2in.	8-32 x 7/8in. (2)	9
9425-4055-P	Pull	Matte Black	Aluminum	128mm	5 1 3/16in.	1/2in.	1 1/2in.	5 5/8in.	-	1 1/2in.	8-32 x 7/8in. (2)	9
9432-4BPN-P	Knob	Brushed Nickel	Aluminum	-	-	-	1 1/2in.	3 3/4in.	1 1/2in.	3/4in.	8-32 x 1in. (1)	9
9433-4026-P	Knob	Polished Chrome	Aluminum	-	-	-	1 1/2in.	3 3/4in.	1 1/2in.	3/4in.	8-32 x 1in. (1)	9
9434-4055-P	Knob	Matte Black	Aluminum	-	-	-	1 1/2in.	3 3/4in.	1 1/2in.	3/4in.	8-32 x 1in. (1)	9

CONTEMPORARY Advantage Five

Part No.	Product Type	Finish	Material	CC	Length	Width	Height/Projection	Hand Clearance	Diameter	Base	Tap/ Screws(Qty)	Page No.
9127-10CZ-P	Pull	Champagne	Zinc	128mm	6 3/8in.	3/4in.	1 3/8in.	5 1/4in.	-	1in.	8-32 x 1in. (2)	10
9128-10CZ-P	Pull	Champagne	Zinc	96mm	5 1/2in.	1/2in.	1 1/2in.	5 5/8in.	-	3/4in.	8-32 x 1in. (2)	10
9129-10CZ-P	Knob	Champagne	Zinc	-	-	-	1in.	4 7/8in.	1 1/2in.	5/8in.	8-32 x 1in. (1)	10
9409-1BPN-P	Pull	Brushed Nickel	Zinc	96mm	5 1/2in.	1/2in.	1 1/2in.	5 5/8in.	-	3/4in.	8-32 x 1in. (2)	10
9410-1026-P	Pull	Polished Chrome	Zinc	96mm	5 1/2in.	1/2in.	1 1/2in.	5 5/8in.	-	3/4in.	8-32 x 1in. (2)	10
9411-1055-P	Pull	Matte Black	Zinc	96mm	5 1/2in.	1/2in.	1 1/2in.	5 5/8in.	-	3/4in.	8-32 x 1in. (2)	10
9412-1BPN-P	Pull	Brushed Nickel	Zinc	128mm	6 3/8in.	3/4in.	1 3/8in.	5 1/4in.	-	1in.	8-32 x 1in. (2)	10
9413-1026-P	Pull	Polished Chrome	Zinc	128mm	6 3/8in.	3/4in.	1 3/8in.	5 1/4in.	-	1in.	8-32 x 1in. (2)	10

CONTEMPORARY Advantage Four *(continued)*

Part No.	Product Type	Finish	Material	CC	Length	Width	Height/Projection	Hand Clearance	Diameter	Base	Tap/ Screws(Qty)	Page No.
9414-1055-P	Pull	Matte Black	Zinc	128mm	6 3/8in.	3/4in.	1 3/8in.	5 1/4in.	-	1in.	8-32 x 1in. (2)	10
9429-1BPN-P	Knob	Brushed Nickel	Zinc	-	-	-	1in.	4 7/8in.	1 1/2in.	5/8in.	8-32 x 1in. (1)	10
9430-1026-P	Knob	Polished Chrome	Zinc	-	-	-	1in.	4 7/8in.	1 1/2in.	5/8in.	8-32 x 1in. (1)	10
9431-1055-P	Knob	Matte Black	Zinc	-	-	-	1in.	4 7/8in.	1 1/2in.	5/8in.	8-32 x 1in. (1)	10

TRADITIONAL Advantage One

Part No.	Product Type	Finish	Material	CC	Length	Width	Height/Projection	Hand Clearance	Diameter	Base	Tap/ Screws(Qty)	Page No.
0912-10CZ-P	Knob	Champagne	Zinc	-	-	-	1 1/2in.	5/8in.	1 1/2in.	5/8in.	8-32 x 1in. (1)	11
0913-1BPN-P	Knob	Brushed Nickel	Zinc	-	-	-	1 1/2in.	5/8in.	1 1/2in.	5/8in.	8-32 x 1in. (1)	11
1738-1BPN-P	Pull	Brushed Nickel	Zinc	3in.	5in.	1/4in.	1in.	4 3/4in.	-	5/8in.	8-32 x 1in. (2)	11
1756-1BPN-P	Knob	Brushed Nickel	Zinc	-	-	-	3/4in.	2 5/8in.	1 1/2in.	5/8in.	8-32 x 1in. (1)	11
1786-1BPN-P	Pull	Brushed Nickel	Zinc	3in.	4 3/4in.	7/8in.	1 5/8in.	2 3/32in.	-	5/8in.	8-32 x 1in. (2)	11
9021-1055-P	Knob	Matte Black	Zinc	-	-	-	1 1/2in.	5/8in.	1 1/2in.	5/8in.	8-32 x 1in. (1)	11
9196-1055-P	Pull	Matte Black	Zinc	3in.	5in.	1/4in.	1in.	4 3/4in.	-	5/8in.	8-32 x 1in. (2)	11
9197-1055-P	Pull	Matte Black	Zinc	3in.	4 3/4in.	7/8in.	1 5/8in.	2 3/32in.	-	5/8in.	8-32 x 1in. (2)	11
9198-10CZ-P	Pull	Champagne	Zinc	3in.	5in.	1/4in.	1in.	4 3/4in.	-	5/8in.	8-32 x 1in. (2)	11
9199-10CZ-P	Pull	Champagne	Zinc	3in.	4 3/4in.	7/8in.	1 5/8in.	2 3/32in.	-	5/8in.	8-32 x 1in. (2)	11
9336-10VB-P	Knob	Verona Bronze	Zinc	-	-	-	3/4in.	2 5/8in.	1 1/2in.	5/8in.	8-32 x 1in. (1)	11
9338-10VB-P	Knob	Verona Bronze	Zinc	-	-	-	1 1/2in.	5/8in.	1 1/2in.	5/8in.	8-32 x 1in. (1)	11
9341-1055-P	Knob	Matte Black	Zinc	-	-	-	3/4in.	2 5/8in.	1 1/2in.	5/8in.	8-32 x 1in. (1)	11
9342-10VB-P	Pull	Verona Bronze	Zinc	3in.	4 3/4in.	7/8in.	1 5/8in.	2 3/32in.	-	5/8in.	8-32 x 1in. (2)	11
9344-10VB-P	Pull	Verona Bronze	Zinc	3in.	5in.	1/4in.	1in.	4 3/4in.	-	5/8in.	8-32 x 1in. (2)	11
9347-10CZ-P	Knob	Champagne	Zinc	-	-	-	3/4in.	2 5/8in.	1 1/2in.	5/8in.	8-32 x 1in. (1)	11

TRADITIONAL Advantage Two

Part No.	Product Type	Finish	Material	CC	Length	Width	Height/Projection	Hand Clearance	Diameter	Base	Tap/ Screws(Qty)	Page No.
1744-1BPN-P	Pull	Brushed Nickel	Zinc	3in.	5 3/4in.	5/8in.	7/8in.	4 3/4in.	-	5/8in.	8-32 x 1in. (2)	12
9186-1055-P	Pull	Matte Black	Zinc	3in.	5 3/4in.	5/8in.	7/8in.	4 3/4in.	-	5/8in.	8-32 x 1in. (2)	12
9187-10CZ-P	Pull	Champagne	Zinc	3in.	5 3/4in.	5/8in.	7/8in.	4 3/4in.	-	5/8in.	8-32 x 1in. (2)	12
9188-10CZ-P	Pull	Champagne	Zinc	3in.	4 1/2in.	3/8in.	1in.	4 3/4in.	-	3/4in.	8-32 x 1in. (2)	12
9189-1055-P	Pull	Matte Black	Zinc	3in.	4 1/2in.	3/8in.	1in.	4 3/4in.	-	3/4in.	8-32 x 1in. (2)	12
9190-10CZ-P	Knob	Champagne	Zinc	-	-	-	1in.	1 1/2in.	1 3/8in.	1in.	8-32 x 1in. (1)	12
9193-1055-P	Knob	Matte Black	Zinc	-	-	-	1in.	1 1/2in.	1 3/8in.	1in.	8-32 x 1in. (1)	12
9346-10VB-P	Pull	Verona Bronze	Zinc	3in.	5 3/4in.	5/8in.	7/8in.	4 3/4in.	-	5/8in.	8-32 x 1in. (2)	12
9374-10VB-P	Knob	Verona Bronze	Zinc	-	-	-	1in.	1 1/2in.	1 3/8in.	1in.	8-32 x 1in. (1)	12
9375-1BPN-P	Knob	Brushed Nickel	Zinc	-	-	-	1in.	1 1/2in.	1 3/8in.	1in.	8-32 x 1in. (1)	12
9377-10VB-P	Pull	Verona Bronze	Zinc	3in.	4 1/2in.	3/8in.	1in.	4 3/4in.	-	3/4in.	8-32 x 1in. (2)	12
9378-1BPN-P	Pull	Brushed Nickel	Zinc	3in.	4 1/2in.	3/8in.	1in.	4 3/4in.	-	3/4in.	8-32 x 1in. (2)	12

SPEC DATA

TRADITIONAL Advantage Three

Part No.	Product Type	Finish	Material	CC	Length	Width	Height/Projection	Hand Clearance	Diameter	Base	Tap/ Screws(Qty)	Page No.
9169-10CZ-P	Knob	Champagne	Zinc	-	-	-	1in.	2 ⁵ / ₃₂ in.	1 1/4in.	7/16in.	8-32 x 1in. (1)	13
9170-1055-P	Knob	Matte Black	Zinc	-	-	-	1in.	2 ⁵ / ₃₂ in.	1 1/4in.	7/16in.	8-32 x 1in. (1)	13
9191-10CZ-P	Cup Pull	Champagne	Zinc	3in.	3 1/2in.	1 11/16in.	1in.	2 ⁹ / ₃₂ in.	-	-	8-32 x 1in. (2)	13
9192-10CZ-P	Pull	Champagne	Zinc	96mm	4in.	3/4in.	1in.	4 ⁹ / ₆₄ in.	-	3/16in.	8-32 x 1in. (2)	13
9194-1055-P	Cup Pull	Matte Black	Zinc	3in.	3 1/2in.	1 11/16in.	1in.	2 ⁹ / ₃₂ in.	-	-	8-32 x 1in. (2)	13
9195-1055-P	Pull	Matte Black	Zinc	96mm	4in.	3/4in.	1in.	4 ⁹ / ₆₄ in.	-	3/16in.	8-32 x 1in. (2)	13
9380-10VB-P	Knob	Verona Bronze	Zinc	-	-	-	1in.	2 ⁵ / ₃₂ in.	1 1/4in.	7/16in.	8-32 x 1in. (1)	13
9381-1BPN-P	Knob	Brushed Nickel	Zinc	-	-	-	1in.	2 ⁵ / ₃₂ in.	1 1/4in.	7/16in.	8-32 x 1in. (1)	13
9383-10VB-P	Pull	Verona Bronze	Zinc	96mm	4in.	3/4in.	1in.	4 ⁹ / ₆₄ in.	-	3/16in.	8-32 x 1in. (2)	13
9384-1BPN-P	Pull	Brushed Nickel	Zinc	96mm	4in.	3/4in.	1in.	4 ⁹ / ₆₄ in.	-	3/16in.	8-32 x 1in. (2)	13
9386-10VB-P	Cup Pull	Verona Bronze	Zinc	3in.	3 1/2in.	1 11/16in.	1in.	2 ⁹ / ₃₂ in.	-	-	8-32 x 1in. (2)	13
9387-1BPN-P	Cup Pull	Brushed Nickel	Zinc	3in.	3 1/2in.	1 11/16in.	1in.	2 ⁹ / ₃₂ in.	-	-	8-32 x 1in. (2)	13

TRADITIONAL Advantage Four

Part No.	Product Type	Finish	Material	CC	Length	Width	Height/Projection	Hand Clearance	Diameter	Base	Tap/ Screws(Qty)	Page No.
0924-1BPN-P	Pull	Brushed Nickel	Zinc	3in.	5 1/4in.	1/2in.	1in.	4 ⁹ / ₆₄ in.	-	3/16in.	8-32 x 1in. (2)	14
0925-1BPN-P	Knob	Brushed Nickel	Zinc	-	-	-	1in.	1 1/16in.	1 1/8in.	3/16in.	8-32 x 1in. (1)	14
0931-1BPN-P	Knob	Brushed Nickel	Zinc	-	-	-	1in.	4 1/16in.	1 3/16in.	1 1/16in.	8-32 x 1in. (1)	14
0935-155-P	Knob	Matte Black	Zinc	-	-	-	1in.	4 1/16in.	1 3/16in.	1 1/16in.	8-32 x 1in. (1)	14
9130-10CZ-P	Pull	Champagne	Zinc	3in.	5 1/2in.	5/8in.	1 5/16in.	5 3/64in.	-	3/16in.	8-32 x 1in. (2)	14
9131-10CZ-P	Knob	Champagne	Zinc	-	-	-	1in.	4 1/16in.	1 3/16in.	1 1/16in.	8-32 x 1in. (1)	14
9132-1055-P	Knob	Matte Black	Zinc	-	-	-	1in.	1 1/16in.	1 1/8in.	3/16in.	8-32 x 1in. (1)	14
9133-10CZ-P	Knob	Champagne	Zinc	-	-	-	1in.	1 1/16in.	1 1/8in.	3/16in.	8-32 x 1in. (1)	14
9134-1055-P	Pull	Matte Black	Zinc	3in.	5 1/4in.	1/2in.	1in.	4 ⁹ / ₆₄ in.	-	3/16in.	8-32 x 1in. (2)	14
9135-10CZ-P	Pull	Champagne	Zinc	3in.	5 1/4in.	1/2in.	1in.	4 ⁹ / ₆₄ in.	-	3/16in.	8-32 x 1in. (2)	14
9351-10VB-P	Knob	Verona Bronze	Zinc	-	-	-	1in.	1 1/16in.	1 1/8in.	3/16in.	8-32 x 1in. (1)	14
9353-10VB-P	Pull	Verona Bronze	Zinc	3in.	5 1/4in.	1/2in.	1in.	4 ⁹ / ₆₄ in.	-	3/16in.	8-32 x 1in. (2)	14
9365-10VB-P	Knob	Verona Bronze	Zinc	-	-	-	1in.	4 1/16in.	1 3/16in.	1 1/16in.	8-32 x 1in. (1)	14
9367-10VB-P	Pull	Verona Bronze	Zinc	3in.	5 1/2in.	5/8in.	1 5/16in.	5 3/64in.	-	3/16in.	8-32 x 1in. (2)	14
9368-1BPN-P	Pull	Brushed Nickel	Zinc	3in.	5 1/2in.	5/8in.	1 5/16in.	5 3/64in.	-	3/16in.	8-32 x 1in. (2)	14
9370-1055-P	Pull	Matte Black	Zinc	3in.	5 1/2in.	5/8in.	1 5/16in.	5 3/64in.	-	3/16in.	8-32 x 1in. (2)	14

TRANSITIONAL Advantage One

Part No.	Product Type	Finish	Material	CC	Length	Width	Height/Projection	Hand Clearance	Diameter	Base	Tap/ Screws(Qty)	Page No.
9171-1BPN-P	Pull	Brushed Nickel	Zinc	96mm	6 3/4in.	7/16in.	1 5/32in.	5 ⁹ / ₆₄ in.	-	7/16in.	8-32 x 1in. (2)	15
9172-1026-P	Pull	Polished Chrome	Zinc	96mm	6 3/4in.	7/16in.	1 5/32in.	5 ⁹ / ₆₄ in.	-	7/16in.	8-32 x 1in. (2)	15
9173-1055-P	Pull	Matte Black	Zinc	96mm	6 3/4in.	7/16in.	1 5/32in.	5 ⁹ / ₆₄ in.	-	7/16in.	8-32 x 1in. (2)	15
9174-10CZ-P	Pull	Champagne	Zinc	96mm	6 3/4in.	7/16in.	1 5/32in.	5 ⁹ / ₆₄ in.	-	7/16in.	8-32 x 1in. (2)	15
9175-10VB-P	Pull	Verona Bronze	Zinc	96mm	6 3/4in.	7/16in.	1 5/32in.	5 ⁹ / ₆₄ in.	-	7/16in.	8-32 x 1in. (2)	15
9176-1BPN-P	Pull	Brushed Nickel	Zinc	128mm	7 25/32in.	1 5/32in.	1 3/16in.	1 1/64in.	-	3/16in.	8-32 x 1in. (2)	15
9177-1026-P	Pull	Polished Chrome	Zinc	128mm	7 25/32in.	1 5/32in.	1 3/16in.	1 1/64in.	-	3/16in.	8-32 x 1in. (2)	15
9178-1055-P	Pull	Matte Black	Zinc	128mm	7 25/32in.	1 5/32in.	1 3/16in.	1 1/64in.	-	3/16in.	8-32 x 1in. (2)	15

TRANSITIONAL Advantage One (continued)

Part No.	Product Type	Finish	Material	CC	Length	Width	Height/Projection	Hand Clearance	Diameter	Base	Tap/ Screws(Qty)	Page No.
9179-10CZ-P	Pull	Champagne	Zinc	128mm	7 25/32in.	1 5/32in.	1 3/16in.	1 1/64in.	-	3/16in.	8-32 x 1in. (2)	15
9180-10VB-P	Pull	Verona Bronze	Zinc	128mm	7 25/32in.	1 5/32in.	1 3/16in.	1 1/64in.	-	3/16in.	8-32 x 1in. (2)	15
9181-1BPN-P	Knob	Brushed Nickel	Zinc	-	1 7/16in.	1 1/16in.	1in.	4 1/64in.	-	7/16in.	8-32 x 1in. (1)	15
9182-1026-P	Knob	Polished Chrome	Zinc	-	1 7/16in.	1 1/16in.	1in.	4 1/64in.	-	7/16in.	8-32 x 1in. (1)	15
9183-1055-P	Knob	Matte Black	Zinc	-	1 7/16in.	1 1/16in.	1in.	4 1/64in.	-	7/16in.	8-32 x 1in. (1)	15
9184-10CZ-P	Knob	Champagne	Zinc	-	1 7/16in.	1 1/16in.	1in.	4 1/64in.	-	7/16in.	8-32 x 1in. (1)	15
9185-10VB-P	Knob	Verona Bronze	Zinc	-	1 7/16in.	1 1/16in.	1in.	4 1/64in.	-	7/16in.	8-32 x 1in. (1)	15

TRANSITIONAL Advantage Two

Part No.	Product Type	Finish	Material	CC	Length	Width	Height/Projection	Hand Clearance	Diameter	Base	Tap/ Screws(Qty)	Page No.
9401-2BPN-P	Pull	Brushed Nickel	Steel	96mm	5 3/8in.	1/2in.	1 1/4in.	2 ⁵ / ₃₂ in.	-	3/16in.	8-32 x 1in. (2)	16
9402-2BPN-P	Pull	Brushed Nickel	Steel	128mm	7 3/8in.	1/2in.	1 1/4in.	2 ⁵ / ₃₂ in.	-	3/16in.	8-32 x 1in. (2)	16
9435-2BPN-P	Knob	Brushed Nickel	Steel	-	1 9/16in.	7/16in.	1 1/4in.	2 ⁵ / ₃₂ in.	-	3/16in.	8-32 x 1in. (1)	16
9517-20VB-P	Pull	Verona Bronze	Steel	160mm	8 1 1/16in.	1/2in.	1 1/4in.	2 ⁵ / ₃₂ in.	-	3/16in.	8-32 x 1in. (2)	16
9519-2026-P	Pull	Polished Chrome	Steel	160mm	8 1 1/16in.	1/2in.	1 1/4in.	2 ⁵ / ₃₂ in.	-	3/16in.	8-32 x 1in. (2)	16
9520-2026-P	Pull	Polished Chrome	Steel	192mm	9 1 5/16in.	1/2in.	1 1/4in.	2 ⁵ / ₃₂ in.	-	3/16in.	8-32 x 1in. (2)	16
9521-2055-P	Pull	Black	Steel	160mm	8 1 1/16in.	1/2in.	1 1/4in.	2 ⁵ / ₃₂ in.	-	3/16in.	8-32 x 1in. (2)	16
9522-2055-P	Pull	Black	Steel	192mm	9 1 5/16in.	1/2in.	1 1/4in.	2 ⁵ / ₃₂ in.	-	3/16in.	8-32 x 1in. (2)	16
9523-20CZ-P	Pull	Champagne	Steel	160mm	8 1 1/16in.	1/2in.	1 1/4in.	2 ⁵ / ₃₂ in.	-	3/16in.	8-32 x 1in. (2)	16
9524-20CZ-P	Pull	Champagne	Steel	192mm	9 1 5/16in.	1/2in.	1 1/4in.	2 ⁵ / ₃₂ in.	-	3/16in.	8-32 x 1in. (2)	16
9540-20CZ-P	Pull	Champagne	Steel	3in.	4 9/16in.	1/2in.	1 1/4in.	2 ⁵ / ₃₂ in.	-	3/16in.	8-32 x 1in. (2)	16
9541-20CZ-P	Pull	Champagne	Steel	96mm	5 3/8in.	1/2in.	1 1/4in.	2 ⁵ / ₃₂ in.	-	3/16in.	8-32 x 1in. (2)	16
9542-20CZ-P	Pull	Champagne	Steel	128mm	7 3/8in.	1/2in.	1 1/4in.	2 ⁵ / ₃₂ in.	-	3/16in.	8-32 x 1in. (2)	16
9543-20CZ-P	Knob	Champagne	Steel	-	1 9/16in.	7/16in.	1 1/4in.	2 ⁵ / ₃₂ in.	-	3/16in.	8-32 x 1in. (1)	16
9544-2055-P	Pull	Black	Steel	3in.	4 9/16in.	1/2in.	1 1/4in.	2 ⁵ / ₃₂ in.	-	3/16in.	8-32 x 1in. (2)	16
9545-2055-P	Pull	Black	Steel	96mm	5 3/8in.	1/2in.	1 1/4in.	2 ⁵ / ₃₂ in.	-	3/16in.	8-32 x 1in. (2)	16
9546-2055-P	Pull	Black	Steel	128mm	7 3/8in.	1/2in.	1 1/4in.	2 ⁵ / ₃₂ in.	-	3/16in.	8-32 x 1in. (2)	16
9547-2055-P	Knob	Black	Steel	-	1 9/16in.	7/16in.	1 1/4in.	2 ⁵ / ₃₂ in.	-	3/16in.	8-32 x 1in. (1)	16
9548-2026-P	Pull	Polished Chrome	Steel	3in.	4 9/16in.	1/2in.	1 1/4in.	2 ⁵ / ₃₂ in.	-	3/16in.	8-32 x 1in. (2)	16
9549-2026-P	Pull	Polished Chrome	Steel	96mm	5 3/8in.	1/2in.	1 1/4in.	2 ⁵ / ₃₂ in.	-	3/16in.	8-32 x 1in. (2)	16
9550-2026-P	Pull	Polished Chrome	Steel	128mm	7 3/8in.	1/2in.	1 1/4in.	2 ⁵ / ₃₂ in.	-	3/16in.	8-32 x 1in. (2)	16
9551-2026-P	Knob	Polished Chrome	Steel	-	1 9/16in.	7/16in.	1 1/4in.	2 ⁵ / ₃₂ in.	-	3/16in.	8-32 x 1in. (1)	16
9557-2BPN-P	Pull	Brushed Nickel	Steel	3in.	4 9/16in.	1/2in.	1 1/4in.	2 ⁵ / ₃₂ in.	-	3/16in.	8-32 x 1in. (2)	16
9559-2BPN-P	Pull	Brushed Nickel	Steel	160mm	8 1 1/16in.	1/2in.	1 1/4in.	2 ⁵ / ₃₂ in.	-	3/16in.	8-32 x 1in. (2)	16
9561-2BPN-P	Pull	Brushed Nickel	Steel	192mm	9 1 5/16in.	1/2in.	1 1/4in.	2 ⁵ / ₃₂ in.	-	3/16in.	8-32 x 1in. (2)	16

SPEC DATA

TRANSITIONAL Advantage Three

Part No.	Product Type	Finish	Material	CC	Length	Width	Height/Projection	Hand Clearance	Diameter	Base	Tap/ Screws(Qty)	Page No.
0919-126-P	Knob	Polished Chrome	Zinc	-	1 1/8in.	3/4in.	1 1/4in.	2 1/2in.	-	9/16in.	8-32 x 1in. (1)	17
0920-1BPN-P	Knob	Brushed Nickel	Zinc	-	1 1/8in.	3/4in.	1 1/4in.	2 1/2in.	-	9/16in.	8-32 x 1in. (1)	17
0930-1055-P	Knob	Matte Black	Zinc	-	1 1/8in.	3/4in.	1 1/4in.	2 1/2in.	-	9/16in.	8-32 x 1in. (1)	17
0961-126-P	Cup Pull	Polished Chrome	Zinc	64mm	3 3/8in.	1 1/8in.	1in.	5 9/16in.	-	-	8-32 x 1in. (2)	17
0963-1BPN-P	Cup Pull	Brushed Nickel	Zinc	64mm	3 3/8in.	1 1/8in.	1in.	5 9/16in.	-	-	8-32 x 1in. (2)	17
0967-155-P	Cup Pull	Matte Black	Zinc	64mm	3 3/8in.	1 1/8in.	1in.	5 9/16in.	-	-	8-32 x 1in. (2)	17
0991-126-P	Pull	Polished Chrome	Zinc	96mm	5in.	9/16in.	1 3/8in.	4 9/16in.	-	1/2in.	8-32 x 7/8in. (2)	17
0992-1BPN-P	Pull	Brushed Nickel	Zinc	96mm	5in.	9/16in.	1 3/8in.	4 9/16in.	-	1/2in.	8-32 x 7/8in. (2)	17
9136-10CZ-P	Cup Pull	Champagne	Zinc	64mm	3 3/8in.	1 1/8in.	1in.	5 9/16in.	-	-	8-32 x 1in. (2)	17
9137-10CZ-P	Knob	Champagne	Zinc	-	1 1/8in.	3/4in.	1 1/4in.	2 1/2in.	-	9/16in.	8-32 x 1in. (1)	17
9138-10CZ-P	Pull	Champagne	Zinc	96mm	5in.	9/16in.	1 3/8in.	4 9/16in.	-	1/2in.	8-32 x 1in. (2)	17
9357-10VB-P	Pull	Verona Bronze	Zinc	96mm	5in.	9/16in.	1 3/8in.	4 9/16in.	-	1/2in.	8-32 x 1in. (2)	17
9359-1055-P	Pull	Matte Black	Zinc	96mm	5in.	9/16in.	1 3/8in.	4 9/16in.	-	1/2in.	8-32 x 1in. (2)	17
9360-10VB-P	Cup Pull	Verona Bronze	Zinc	64mm	3 3/8in.	1 1/8in.	1in.	5 9/16in.	-	-	8-32 x 1in. (2)	17
9362-10VB-P	Knob	Verona Bronze	Zinc	-	1 1/8in.	3/4in.	1 1/4in.	2 1/2in.	-	9/16in.	8-32 x 1in. (1)	17

TRANSITIONAL Advantage Four

Part No.	Product Type	Finish	Material	CC	Length	Width	Height/Projection	Hand Clearance	Diameter	Base	Tap/ Screws(Qty)	Page No.
0036-1BPN-P	Knob	Brushed Nickel	Zinc	-	-	-	1in.	-	1 7/32in.	7/16in.	8-32 x 1in. (1)	18
0047-1055-P	Knob	Matte Black	Zinc	-	-	-	1in.	-	1 7/32in.	7/16in.	8-32 x 1in. (1)	18
0049-1026-P	Knob	Polished Chrome	Zinc	-	-	-	1in.	-	1 7/32in.	7/16in.	8-32 x 1in. (1)	18
9040-1BPN-P	Pull	Brushed Nickel	Zinc	96mm	4 7/32in.	1 5/32in.	1 3/8in.	2 3/32in.	-	1 5/32in.	8-32 x 1in. (2)	18
9041-1BPN-P	Pull	Brushed Nickel	Zinc	128mm	5 1/2in.	1 5/32in.	1 3/8in.	2 3/32in.	-	1 5/32in.	8-32 x 1in. (2)	18
9042-1055-P	Pull	Matte Black	Zinc	96mm	4 7/32in.	1 5/32in.	1 3/8in.	2 3/32in.	-	1 5/32in.	8-32 x 1in. (2)	18
9043-1055-P	Pull	Matte Black	Zinc	128mm	5 1/2in.	1 5/32in.	1 3/8in.	2 3/32in.	-	1 5/32in.	8-32 x 1in. (2)	18
9044-1026-P	Pull	Polished Chrome	Zinc	96mm	4 7/32in.	1 5/32in.	1 3/8in.	2 3/32in.	-	1 5/32in.	8-32 x 1in. (2)	18
9045-1026-P	Pull	Polished Chrome	Zinc	128mm	5 1/2in.	1 5/32in.	1 3/8in.	2 3/32in.	-	1 5/32in.	8-32 x 1in. (2)	18
9046-10CZ-P	Pull	Champagne	Zinc	96mm	4 7/32in.	1 5/32in.	1 3/8in.	2 3/32in.	-	1 5/32in.	8-32 x 1in. (2)	18
9047-10CZ-P	Pull	Champagne	Zinc	128mm	5 1/2in.	1 5/32in.	1 3/8in.	2 3/32in.	-	1 5/32in.	8-32 x 1in. (2)	18
9048-4BPN-P	Pull	Brushed Nickel	Aluminum	96mm	4 17/32in.	1 1/32in.	1 1/2in.	2 3/32in.	-	3 1/32in.	8-32 x 1in. (2)	18
9049-4055-P	Pull	Matte Black	Aluminum	96mm	4 17/32in.	1 1/32in.	1 1/2in.	2 3/32in.	-	3 1/32in.	8-32 x 1in. (2)	18
9050-4026-P	Pull	Polished Chrome	Aluminum	96mm	4 17/32in.	1 1/32in.	1 1/2in.	2 3/32in.	-	3 1/32in.	8-32 x 1in. (2)	18
9051-40CZ-P	Pull	Champagne	Aluminum	96mm	4 17/32in.	1 1/32in.	1 1/2in.	2 3/32in.	-	3 1/32in.	8-32 x 1in. (2)	18
9052-4BPN-P	Pull	Brushed Nickel	Aluminum	128mm	5 3 1/32in.	1 1/32in.	1 1/2in.	2 3/32in.	-	3 1/32in.	8-32 x 1in. (2)	18
9053-4055-P	Pull	Matte Black	Aluminum	128mm	5 3 1/32in.	1 1/32in.	1 1/2in.	2 3/32in.	-	3 1/32in.	8-32 x 1in. (2)	18
9054-4026-P	Pull	Polished Chrome	Aluminum	128mm	5 3 1/32in.	1 1/32in.	1 1/2in.	2 3/32in.	-	3 1/32in.	8-32 x 1in. (2)	18
9055-40CZ-P	Pull	Champagne	Aluminum	128mm	5 3 1/32in.	1 1/32in.	1 1/2in.	2 3/32in.	-	3 1/32in.	8-32 x 1in. (2)	18
9056-4BPN-P	Pull	Brushed Nickel	Aluminum	160mm	7 1 7/32in.	1 3/32in.	1 1/2in.	2 3/32in.	-	3 1/32in.	8-32 x 1in. (2)	18
9057-4055-P	Pull	Matte Black	Aluminum	160mm	7 1 7/32in.	1 3/32in.	1 1/2in.	2 3/32in.	-	3 1/32in.	8-32 x 1in. (2)	18
9058-4026-P	Pull	Polished Chrome	Aluminum	160mm	7 1 7/32in.	1 3/32in.	1 1/2in.	2 3/32in.	-	3 1/32in.	8-32 x 1in. (2)	18
9059-40CZ-P	Pull	Champagne	Aluminum	160mm	7 1 7/32in.	1 3/32in.	1 1/2in.	2 3/32in.	-	3 1/32in.	8-32 x 1in. (2)	18
9060-4BPN-P	Pull	Brushed Nickel	Aluminum	192mm	8 2 9/32in.	1 3/32in.	1 3/32in.	2 3/32in.	-	1 1/2in.	8-32 x 1in. (2)	18

TRANSITIONAL Advantage Four (continued)

Part No.	Product Type	Finish	Material	CC	Length	Width	Height/Projection	Hand Clearance	Diameter	Base	Tap/ Screws(Qty)	Page No.
9061-4055-P	Pull	Matte Black	Aluminum	192mm	8 2 9/32in.	1 3/32in.	1 3/32in.	2 3/32in.	-	1 1/2in.	8-32 x 1in. (2)	18
9062-4026-P	Pull	Polished Chrome	Aluminum	192mm	8 2 9/32in.	1 3/32in.	1 3/32in.	2 3/32in.	-	1 1/2in.	8-32 x 1in. (2)	18
9063-40CZ-P	Pull	Champagne	Aluminum	192mm	8 2 9/32in.	1 3/32in.	1 3/32in.	2 3/32in.	-	1 1/2in.	8-32 x 1in. (2)	18
9064-10CZ-P	Knob	Champagne	Zinc	-	-	-	1in.	-	1 7/32in.	7/16in.	8-32 x 1in. (1)	18

ADVANTAGE Wire Pulls

Part No.	Product Type	Finish	Material	CC	Length	Width	Height/Projection	Hand Clearance	Diameter	Base	Tap/ Screws(Qty)	Page No.
6126-2055-P	Pull	Matte Black	Steel	4in.	4 5/16in.	5/16in.	1 1/4in.	1 5/16in.	-	5/16in.	8-32 x 1in. (2)	19
6127-2055-P	Pull	Matte Black	Steel	96mm	4 1/16in.	5/16in.	1 1/4in.	1 5/16in.	-	5/16in.	8-32 x 1in. (2)	19
6128-2055-P	Pull	Matte Black	Steel	3 1/2in.	3 1 3/16in.	5/16in.	1 1/4in.	1 5/16in.	-	5/16in.	8-32 x 1in. (2)	19
6129-2055-P	Pull	Matte Black	Steel	3in.	3 5/16in.	5/16in.	1 1/4in.	1 5/16in.	-	5/16in.	8-32 x 1in. (2)	19
6130-2SC-P	Pull	Satin Chrome	Steel	4in.	4 5/16in.	5/16in.	1 1/4in.	1 5/16in.	-	5/16in.	8-32 x 1in. (2)	19
6131-2SC-P	Pull	Satin Chrome	Steel	96mm	4 1/16in.	5/16in.	1 1/4in.	1 5/16in.	-	5/16in.	8-32 x 1in. (2)	19
6132-2SC-P	Pull	Satin Chrome	Steel	3 1/2in.	3 1 3/16in.	5/16in.	1 1/4in.	1 5/16in.	-	5/16in.	8-32 x 1in. (2)	19
6133-2SC-P	Pull	Satin Chrome	Steel	3in.	3 5/16in.	5/16in.	1 1/4in.	1 5/16in.	-	5/16in.	8-32 x 1in. (2)	19
6134-4SAL-P	Pull	Satin Aluminum	Aluminum	3 1/2in.	3 1 3/16in.	5/16in.	1 1/4in.	1 5/16in.	-	5/16in.	8-32 x 1in. (2)	19
6135-4SAL-P	Pull	Satin Aluminum	Aluminum	3in.	3 5/16in.	5/16in.	1 1/4in.	1 5/16in.	-	5/16in.	8-32 x 1in. (2)	19
6136-4SAL-P	Pull	Satin Aluminum	Aluminum	4in.	4 5/16in.	5/16in.	1 1/4in.	1 5/16in.	-	5/16in.	8-32 x 1in. (2)	19
6137-4SAL-P	Pull	Satin Aluminum	Aluminum	96mm	4 1/16in.	5/16in.	1 1/4in.	1 5/16in.	-	5/16in.	8-32 x 1in. (2)	19
6140-226-P	Pull	Polished Chrome	Steel	4in.	4 5/16in.	5/16in.	1 1/4in.	1 5/16in.	-	5/16in.	8-32 x 1in. (2)	19
6141-226-P	Pull	Polished Chrome	Steel	96mm	4 1/16in.	5/16in.	1 1/4in.	1 5/16in.	-	5/16in.	8-32 x 1in. (2)	19
6142-226-P	Pull	Polished Chrome	Steel	3 1/2in.	3 1 3/16in.	5/16in.	1 1/4in.	1 5/16in.	-	5/16in.	8-32 x 1in. (2)	19
6143-226-P	Pull	Polished Chrome	Steel	3in.	3 5/16in.	5/16in.	1 1/4in.	1 5/16in.	-	5/16in.	8-32 x 1in. (2)	19
6150-203-P	Pull	Polished Brass	Steel	4in.	4 5/16in.	5/16in.	1 1/4in.	1 5/16in.	-	5/16in.	8-32 x 1in. (2)	19
6151-203-P	Pull	Polished Brass	Steel	96mm	4 1/16in.	5/16in.	1 1/4in.	1 5/16in.	-	5/16in.	8-32 x 1in. (2)	19
6152-203-P	Pull	Polished Brass	Steel	3 1/2in.	3 1 3/16in.	5/16in.	1 1/4in.	1 5/16in.	-	5/16in.	8-32 x 1in. (2)	19
6153-203-P	Pull	Polished Brass	Steel	3in.	3 5/16in.	5/16in.	1 1/4in.	1 5/16in.	-	5/16in.	8-32 x 1in. (2)	19
6160-2SB-P	Pull	Satin Brass	Steel	4in.	4 5/16in.	5/16in.	1 1/4in.	1 5/16in.	-	5/16in.	8-32 x 1in. (2)	19
6161-2SB-P	Pull	Satin Brass	Steel	96mm	4 1/16in.	5/16in.	1 1/4in.	1 5/16in.	-	5/16in.	8-32 x 1in. (2)	19
6162-2SB-P	Pull	Satin Brass	Steel	3 1/2in.	3 1 3/16in.	5/16in.	1 1/4in.	1 5/16in.	-	5/16in.	8-32 x 1in. (2)	19
6163-2SB-P	Pull	Satin Brass	Steel	3in.	3 5/16in.	5/16in.	1 1/4in.	1 5/16in.	-	5/16in.	8-32 x 1in. (2)	19
6170-20VB-P	Pull	Verona Bronze	Steel	4in.	4 5/16in.	5/16in.	1 1/4in.	1 5/16in.	-	5/16in.	8-32 x 1in. (2)	19
6171-20VB-P	Pull	Verona Bronze	Steel	96mm	4 1/16in.	5/16in.	1 1/4in.	1 5/16in.	-	5/16in.	8-32 x 1in. (2)	19
6172-20VB-P	Pull	Verona Bronze	Steel	3 1/2in.	3 1 3/16in.	5/16in.	1 1/4in.	1 5/16in.	-	5/16in.	8-32 x 1in. (2)	19
6173-20VB-P	Pull	Verona Bronze	Steel	3in.	3 5/16in.	5/16in.	1 1/4in.	1 5/16in.	-	5/16in.	8-32 x 1in. (2)	19
6240-2BPN-P	Pull	Brushed Nickel	Steel	3in.	3 5/16in.	5/16in.	1 1/4in.	1 5/16in.	-	5/16in.	8-32 x 1in. (2)	19
6242-2BPN-P	Pull	Brushed Nickel	Steel	3 1/2in.	3 1 3/16in.	5/16in.	1 1/4in.	1 5/16in.	-	5/16in.	8-32 x 1in. (2)	19
6244-2BPN-P	Pull	Brushed Nickel	Steel	96mm	4 1/16in.	5/16in.	1 1/4in.	1 5/16in.	-	5/16in.	8-32 x 1in. (2)	19
6246-2BPN-P	Pull	Brushed Nickel	Steel	4in.	4 5/16in.	5/16in.	1 1/4in.	1 5/16in.	-	5/16in.	8-32 x 1in. (2)	19

Inches	Millimeters
1 ¼in.	32mm
2 ¾in.	56mm
2 ½in.	64mm
3in.	76.2mm
3 ½in.	83.9mm
3 ²⁄₃in.	96mm
4in.	101.6mm
4 ¹⁄₂in.	112mm
5 ¼in.	128mm
6in.	152.4mm
6 ⁵⁄₁₆in.	160mm
6 ²⁄₃in.	169mm
7 ⁹⁄₁₆in.	192mm
8 ¹³⁄₁₆in.	224mm
10 ¼in.	256mm
11 ¹⁄₂in.	288mm
12in.	304.8mm
12 ¹⁹⁄₃₂in.	320mm
15 ⅛in.	384mm
16 ³⁄₈in.	416mm
17 ²⁄₃in.	448mm
18in.	457.2mm
21 ¹³⁄₃₂in.	544mm
25 ⁷⁄₃₂in.	640mm
26 ²⁵⁄₃₂in.	672mm
30 ⁷⁄₃₂in.	768mm

Advantage +Plus by Berenson

2495 Main Street, Suite 111 Buffalo, NY 14214-2152
 Phone: 800.333.0578 | Fax: 716.833.2402
 Email: Info@BerensonHardware.com
BerensonHardware.com

© 2026 Berenson Corp

26.04
 0531-MARK-01

FOLLOW US ON SOCIAL MEDIA!



Scan the QR code for easy access to our social media pages & to view our digital catalogs!

